

Jaywick

Community Plan

*"What We Want for the
Future!"*

**Report on Findings of Consultation Exercises
held April – September 2003**

**Clare Evans and Suzanne Roast
Rural Community Council of Essex**



Jaywick Community Forum

Jaywick Community Plan Action Plan Update – September

Buildings

Objectives

- Removal of derelict buildings
- Upgrading buildings
- Compliance with regulations
- Maintain local seafront character
- New development to reflect local character

Action

Tendring District Council have identified several unfit and untidy properties in the Brooklands & Grasslands area and have instigated legal action against the owners for non-compliance. Several cases have already gone to court and fines have been made against the owners. There are several more cases in the pipeline and it expected that these will be heard at court in the coming months.

Discussions are still on-going between the Council and Go-East regarding additional funding for the purchase and demolition of derelict property.

The Review of the Local Plan is still on-going and will link in with the Master Planning exercise referred to below.

Consultants have been appointed to prepare the Master Plan for Jaywick which is being promoted by Tendring District Council, Essex County Council, Environment Agency, GO-East and East of England Development Agency. It is hoped that the Plan will be ready in draft in March. The Forum and the community will be involved throughout the process to make sure that the agencies and local people agree a common plan.

Roads & Access

Objectives

- Maintenance of roads in Brooklands & Grasslands
- Maintenance of footpaths
- Traffic management schemes
- Speed limit enforcement
- Additional bus stops
- Access to sea front

Action

The Essex County Council have confirmed the inclusion of a £6m road improvement programme for Jaywick in the Essex Local Transport Plan 2006-2012. Design work for the scheme will be undertaken when the Master Planning exercise is completed.

Parking

Objectives

- Parking enforcement
- Resurface car parks
- Signposting
- Resident only parking

Action

Joint action by the Police, Tendring District Council, Essex County Council and DVLA. Targeting vehicles with incomplete documentation and their subsequent removal.

Service and Facilities

Objectives

- Maintenance of public toilets
- Additional recycling facilities
- Screened recycling facilities
- Second Health Centre
- Additional Community facilities

Action

✕ After discussions with Tendring District Council a new recycling facility will be created at the Jaywick Community Resources Centre.

The new Bishops Park College has now opened and contains a specific unit dedicated to community use.

✕ Review of Health Centre provision taking place.

Play and Recreation

Objectives

- Clean beaches
- Dog controls on beaches
- Retain Seymour Road play area
- Preserve open spaces
- New childrens play facilities
- Prevent beach erosion

Action

Discussions have been held with the planning officers in Tendring District Council to ensure that open space provision within the new Local Plan for Jaywick is increased. The Crossways Open Space landscaping and enhancement project has recently been completed and the creation of a Community Garden at Midway has also been completed. The projects were entered in the Anglia in Bloom New Neighbourhood competition and the Green Team have been awarded a Certificate of Merit for their work. The Forum have been unsuccessful in their application to Fair Share for funding for two further landscaping schemes at Jaywick Resources Centre and Garden Road. A further bid was made to the 'Lottery Millions' competition for the Resources Centre scheme but this was also unsuccessful.

Environmental/Green

Objectives

- Removal of abandoned cars
- Enforcement action against fly tippers
- Clean-up campaigns
- Encourage maintenance of domestic gardens
- Development of land in Lotus Way

Action

The Police, Tendring District Council, Environment Agency, Essex County Council and DVLA have carried out a campaign targeting unlicensed cars and abandoned cars which has resulted in the removal of several vehicles. Two 'Clean-up' days have been held in Brooklands and Grasslands in a joint operation by the Police, Tendring District Council, Fire Brigade and the Army. Several tons of rubbish were removed and residents warned that action will be taken in the future against offenders.

The Jaywick Green Team have been successful in obtaining a grant towards the running of Jaywick in Flower competition for 2005 but there was an insufficient number of entries and the grant was used for placing of decorative flower tubs at the front of the Resources Centre. This has proved to be very popular.

The open land in Lotus Way will be subject to the Local Plan Review.

Local Businesses

Objectives

- CCTV
- Encourage business facilities

Action

The Forum have been successful in obtaining some funding from the Fair Share Trust towards the installation of CCTV in the Jaywick area but this was insufficient for the full scheme to be carried out and the Fair Share Trust are in discussions with the Tendring District Council to agree a way forward.

Contents

| Section | Title | Page |
|-------------------|----------------------------|-----------|
| i | Executive Summary | 3 |
| ii | Background | 4 |
| iii | Methodology | 4 |
| 1 | Design and Property | 5 |
| 2 | Essential Services | 11 |
| 3 | Transport | 13 |
| 4 | Recreation | 15 |
| 5 | Local Economy | 19 |
| Appendices | | 20 |
| Appendix 1 | Complete Action Plan | 20 |
| Appendix 2 | Attendance at events | 25 |
| Appendix 3 | Abbreviations and Acronyms | 28 |

Executive Summary

This report was compiled based on findings of community consultation in Jaywick. Those participating were primarily permanent residents in the village; although a small number of 'seasonal residents' (those staying in Jaywick for the summer season) and persons employed in Jaywick but not resident there were also allowed to submit their views. The aim was to ensure proportional representation and a fair reflection of the views of the community as a whole.

The document is divided into sections to show the priorities for each of 5 aspects of living (Design & Property, Essential Services, Transport, Recreation and Local Economy). For each priority area the report highlights the existing situation, comments/feelings of local people, and an action plan – showing objectives and actions, who can assist in the implementation and an estimated timescale.

It has also been possible to highlight the desired actions with an overall priority:

Key Priorities:

- ❖ More bus shelters
- ❖ Surfaces should be maintained
- ❖ Beach should be kept clean
- ❖ Abandoned cars should be removed

Secondary Priorities:

- ❖ Pedestrian Crossings should be introduced
- ❖ Seating/benches should be encouraged
- ❖ Bins should be provided along the beach
- ❖ Potholes should be repaired
- ❖ Public toilets should be retained and maintained
- ❖ Derelict buildings should be pulled down
- ❖ Fly tipping should be stopped

This Parish Plan was funded by The Countryside Agency through the Vital Villages Parish Plans Scheme, and supported by the Rural Community Council of Essex.

Background

The Rural Community Council of Essex (RCCE) received initial contact from the Jaywick Community Forum in September 2002. From this a meeting was then held on 11 December, attended by Mary Puddick (JCF), Eileen Winnington (RCCE), Suzanne Roast (RCCE), John Dennison (TDC) and Andrew Mowle (independent consultant).

Subsequent work was undertaken by the following team:

| | | Time involved (month / year) |
|-------------------|----------------------------------|---------------------------------|
| Clare Evans | Rural Community Council of Essex | 04.03 – 12.04 |
| Suzanne Roast | Rural Community Council of Essex | 09.02 – 12.04 |
| Eileen Winnington | Rural Community Council of Essex | 09.02 – 04.03 |
| Andrew Mowle | Independent Consultant | 11.03 – 06.03 |
| Therese Quinlivan | Guinness Trust | 01.03 – 06.03 |

Methodology

The initial stages of the project focussed on gathering input from the local community, and to this end a series of consultation events were staged in 2003.

- 26 Apr Open Consultation: Drop-in Workshop
- 17 May VDS Workshop
- 05 Jun Exhibition and Consultation at Resources Centre (Brooklands)
- 05 Jun Exhibition and Consultation at Methodist Church (Village/Tudor)
- 19 Jun Action Planning Event
- 29 Aug. Group Consultation: Little Pals / Indoor Bowls
- 11 Sept Group Consultation: Surestart Parents Forum
- 16 Sept Group Consultation: Stay and Play
- 27 Sept Open Consultation: 'Who's Who in Jaywick' event
- 12 Nov Group Consultation: Surestart Drop-In

The first five events were open to all residents in Jaywick and targeted advertising was sent to encourage members of local groups, organisations and authorities to attend. Following an analysis of the attendance, the following five events were targeted at parts of the community that it was recognised had previously had limited involvement. Residents' awareness of two of the events was heightened through door-to-door leaflet distribution and a poster campaign.

The details of attendance at the various events are shown in appendix 1.

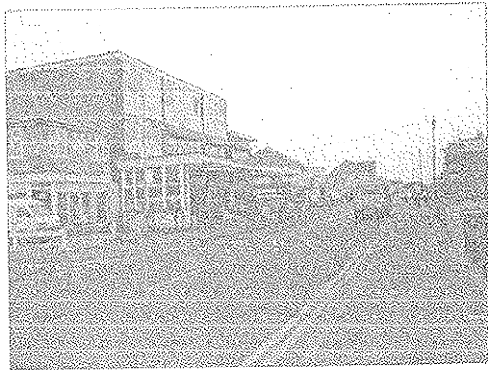
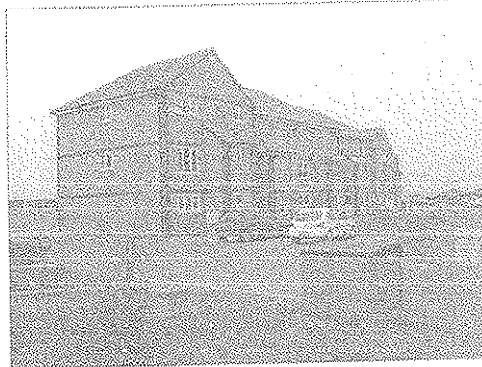
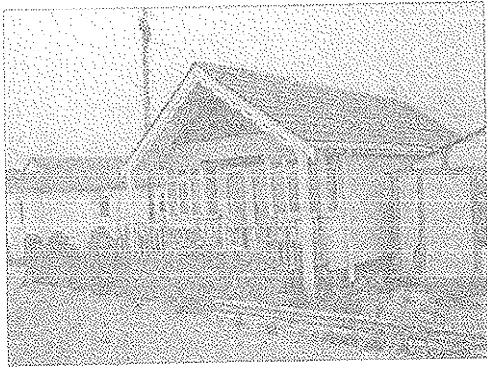
All events, except the VDS workshop and Action Planning event, were run on a drop-in basis, allowing people to come along at a time, and duration, convenient for them. The VDS workshop and Action Planning event allowed drop-in contributions, but attendees were encouraged to stay for the duration of the events to enable maximum benefit to be gained. Refreshments were available at all events.

1 Design and Property

1.1 Buildings

1.1.1 What have we got?

- Distinct areas (the Village, Tudor Estate and Brooklands and Grasslands)
- A mixture of designs and structures



| | |
|---------------------------------|-------------------------|
| Fig 1: Chalet-style House | Fig 2: Flats |
| Fig 3: Residential & Commercial | Fig 4: Detached Housing |

1.1.2 What do we think?

- Derelict buildings should be pulled down
- All properties should be upgraded to an acceptable standard
- Planning and building regulations should be enforced
- Caravans should be kept off public roads
- Seafront buildings should reflect local character, a mixture of designs
- New development should be in character reflecting local styles and architecture
- Building development should be kept to a strict timetable
- Innovative design should be encouraged - e.g. art deco style buildings
- Single Plot housing should be encouraged
- Housing like Belsize Flats should be encouraged
- Lotus Way layout is a good example for future development
- Seafront property should be developed for tourists
- The individuality of areas should be recognised (Tudor Estate / The Village / Brooklands & Grasslands)



| | |
|------------------------------|-------------------------------------|
| Fig 5: Derelict Buildings | Fig 6: Derelict Buildings |
| Fig 7: Inappropriate parking | Fig 8: Enterprise Centre, Lotus Way |

1.1.3 What needs to happen?

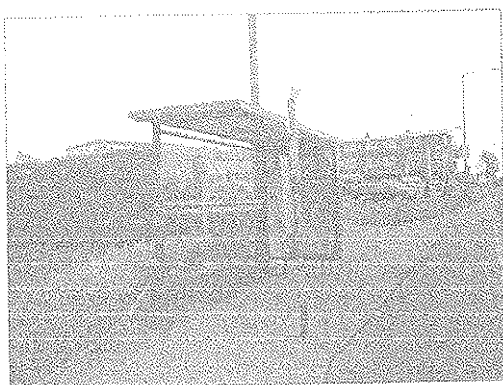
| Objective | Action | Who | When |
|--|---|--|------------------------------------|
| Removal of derelict buildings | Demolition orders | TDC Environmental Services | Commenced June 2004; ongoing |
| Upgrading buildings | Council – statutory responsibility Private owned – funding information | TDC Housing Home Improvement Agency Landlords | Ongoing |
| Upgrading buildings | TDC is administering Major Works Assistance grants for Private Sector Housing, to make homes fit for habitation. Interest free loans of up to £20,000 are available. (JRS 3.1; Sept 2003) | TDC as administrator | Already commenced. Ongoing. |
| All buildings to adhere to regulations | Enforcement of building regulations. (Supported by JRS 4.2; Sept 2003) | TDC Planning | Ongoing |
| No caravans parked on public roads | Removal of caravans from <i>public</i> roads / provision of long-term parking | TDC | Ongoing |

| | | | |
|--|-------------------------------|--------------|--------------------|
| Maintaining local seafront character | Recognition at planning stage | TDC Planning | Revised Local Plan |
| New development to reflect local character | Recognition at planning stage | TDC Planning | Revised Local Plan |

1.2 Street Furniture

1.2.1 What have we got?

- Benches
- Street Lighting in some areas
- No pedestrian crossings (some pedestrian refuges)
- Few bus shelters



| | |
|-------------------------|---------------------------|
| Fig 9: Bus Stop | Fig 10: Seating |
| Fig 11: Street Lighting | Fig 12: Pedestrian Refuge |

1.2.2 What do we think?

- More bus shelters are needed
- Pedestrian crossings should be introduced, especially close to local services, bus stops, etc
- Seating / benches should be encouraged in public areas
- Bins should be provided along the beach and Brooklands area
- Cycle paths should be introduced where possible to improve road safety
- Lighting along footpaths needed
- Where possible lighting along roadways should be improved and additional lighting installed
- Where possible overhead cables should be replaced with underground supplies
- Road signs should be maintained

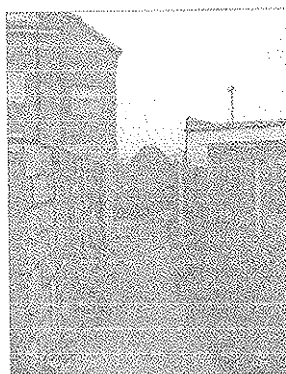
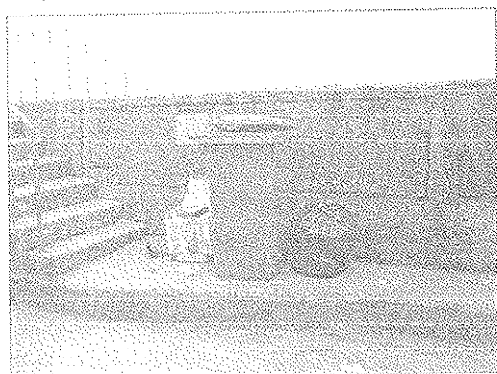


Fig 13: Road Name Sign
Fig 15: Litter Bin

Fig 14: Utilities Station
Fig 16: Unlit Footpath

1.2.3 What needs to happen?

| Objective | Action | Who | When |
|---------------------------------|---|--|---|
| More Bus shelters | Review of current positioning / confirm desired location for additional shelter(s) | RCCE & community | June 2005 |
| More Bus shelters | Introduce shelter in new location, preferably on Spine Road | ECC/TDC | Shelters erected by Adshel, ¾ through 2 year contract. Likely to be negotiated in next contract period. |
| Pedestrian crossings | Review of specific site(s) of need | RCCE & community | June 2005 |
| Pedestrian crossings | Consider / Introduce new crossing or alternative road safety measures at Crossways junction | ECC/TDC | 2005 – 2006 |
| Addition of seating and benches | Review of current positioning | RCCE & community | June 2005 |
| Addition of seating and benches | Consider / Introduce new seating | TDC Technical and Procurement | 2005 – 2006 |
| Reduction in litter | Provision of bins | TDC: Environmental Health | Autumn 2005 |
| Reduction in litter | Supporting litter picking | Jaywick Forum <i>Green Team</i> TDC Environmental Services | Ongoing |

| | | | |
|--------------------------------|---|--|-------------|
| Cycle paths | Identify potential routes | Jaywick Residents RCCE ECC | Summer 2005 |
| Lighting on footpaths | Review of current positioning | ECC / TDC | Spring 2005 |
| Lighting on roadways | TDC / ECC Transportation and Infrastructure Scoping Review | ECC / TDC | 2006 – 16 |
| | Explore other options | Community & RCCE | Ongoing |
| Removal of overhead powerlines | Replacing overhead cables underground | Service Providers Electricity de France | 2006 |
| Maintenance of road signs | Directional road signs | ECC | Ongoing |
| Maintenance of road signs | Road name signs (£120 / sign) | TDC | 2005-6 |

1.3 Parking

What have we got?

- Car Park adjacent to beach



Fig 17: Car Park

Fig 18: Unauthorised Street Parking

What do we think?

- Measures should be taken to reduce on-street parking
- Parking restrictions should be enforced
- Existing Car parks should be resurfaced
- Existing Car parks should have clearer signposts
- Existing Car parks should have special parking areas for local people
- Pay and display car parks should be introduced



Fig 19: Inappropriate Street Parking



Fig 20: Unauthorised Street Parking

What needs to happen?

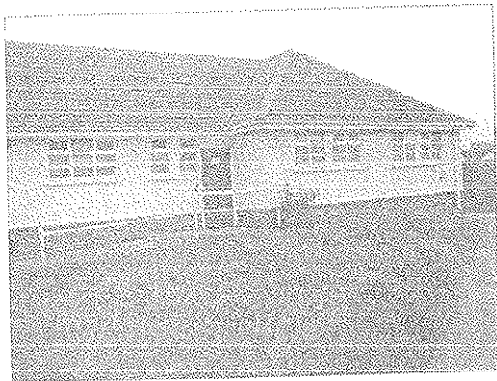
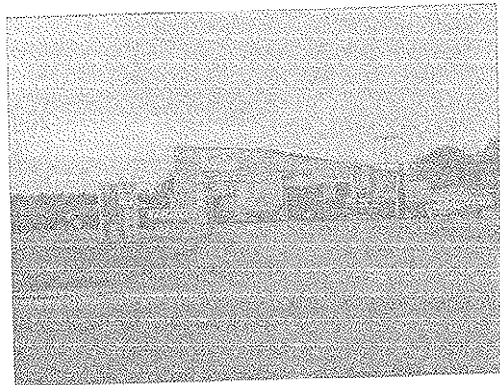
| Objective | Action | Who | When |
|--------------------------------|--|-------------------------------|--------------------|
| Reduction of on-street parking | Enforcement of parking restrictions | TDC Technical and Procurement | Ongoing |
| No cars parked illegally | Enforcement of parking restrictions | TDC Technical and Procurement | Ongoing |
| Carparks to high standard | Resurfacing carparks | TDC Technical and Procurement | Autumn 2005 |
| Signposting carparks | Review of current | TDC Technical and Procurement | Summer/Autumn 2005 |
| Parking for local people | Marked Resident only parking | TDC Technical and Procurement | 2006 |
| Pay and Display car parks | Introduction of Pay and display carparks | TDC Technical and Procurement | 2006 |

2 Essential Services

2.1 Services and facilities

2.1.1 What have we got?

- Schools (Primary and Secondary)
- Health Centre
- Resources Centre
- Shops
- Public Houses
- Café
- Amusements
- Caravan Park



| | |
|-----------------------------|---------------------------------|
| Fig 21: Health Centre | Fig 22: Jaywick Lane Farm Shop |
| Fig 23: Public Conveniences | Fig 24: Three Jays Public House |

2.1.2 What do we think?

- Public toilets should be retained and maintained.
- The current Bishop's Park Comprehensive school structure should be kept for local community use
- An additional recycling facility should be introduced in the centre of Jaywick
- Utility facilities should be screened / landscaped. (e.g. electricity sub-stations)
- A second Health Centre is needed.

2.1.3 What needs to happen?

| Objective | Action | Who | When |
|---|---|---|-------------|
| Public toilets at high standard | Maintenance of public toilets | <i>Need to identify ownership</i> | Summer 2005 |
| Retaining Bishop's Park school building for community use | New building to become a joint service centre | Partnership supported by central government | Ongoing |
| Jaywick recycling facilities | Creation of additional facilities | TDC Environmental Services | 2006 |
| Screened landscaping utilities | Screening landscaping utilities | Green Team | 2006 |
| Second Health Centre | Undertake needs assessment | Tendring PCT | 2007 |

3 Transport

3.1 Roads and access

3.1.1 What have we got?

- A regular bus service
- The introduction of the Spine Road (2003)
- A Train Station within walking distance
- ECC: due to undertake Resident Based Transport Needs Survey in 2004

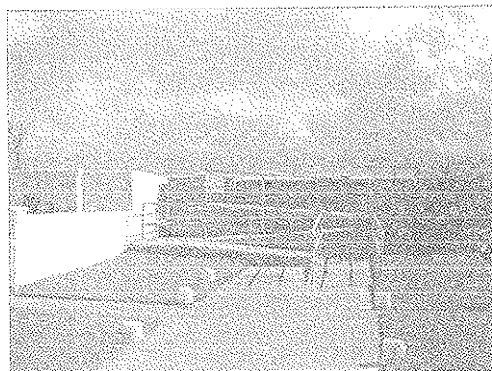
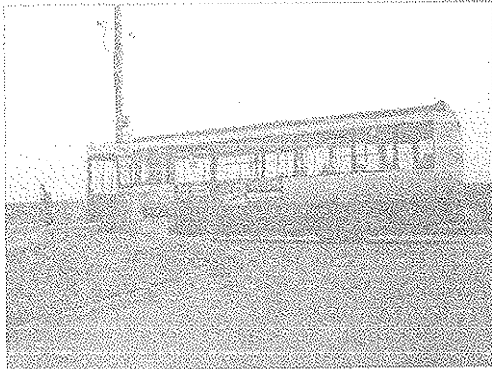


Fig 25: Public Transport

Fig 26: Abandoned Vehicle

Fig 27: Accessible Footpath Entrance

Fig 28: Poor Access

3.1.2 What do we think?

- Surfaces (eg paving) should be maintained to minimise danger to pedestrians
- Potholes should be repaired
- Speed limits should be enforced
- Roadways should be resurfaced
- Access to the seafront should be improved. (Sea Thistle Way is a good example of a well-maintained and disabled-friendly access point)
- New roads should ensure adequate drainage. (Lanchester Avenue is a good example of a new road with mains drainage)
- Additional bus stops should be in residential areas
- Access roads / paths should be maintained
- Public pathways should be maintained
- More one-way systems should be considered as an aid to improving traffic flow
- Double yellow lines should be introduced or maintained at main junctions.
- Traffic management should consider road widths

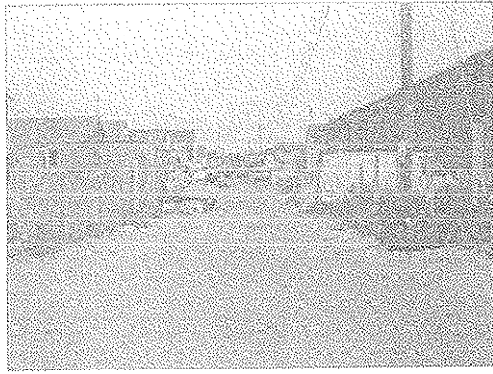


Fig 29: Poor Road Surfacing



Fig 30: Effective Double Yellow Lines

What needs to happen?

| Objective | Action | Who | When |
|--|---|--|--|
| Maintenance of road surfaces / pavement surfaces | Adoption of roads by ECC | ECC | Ongoing |
| | Recognition of need in ECC highways budget | ECC | Local Transport Plan 2006-10 |
| Enforcement of speed limits | Mobile speed safety checks | Essex Police | Ongoing |
| Access to the seafront | Review existing and potential access points (including disabled access) | Jaywick Residents supported by RCCE | Summer 2005 |
| New roads should have adequate drainage | Consideration at planning stage | TDC Leisure ECC / TDC | Ongoing |
| Additional bus stops | Review of existing stops and gaps in service provision | ECC to implement findings of review of local bus transport provision TDC | Ongoing Local Transport Plan 2006-10 (not priority) |
| Maintenance of footpaths | Review and monitoring scheme to be established | Current TDC inspection of existing adopted pathways Green Team to monitor and report to TDC | 3 monthly Ongoing |
| One-way systems | Consideration of new development at planning stage | TDC Planning | Ongoing |
| Double yellow lines to prevent parking at main junctions | | ECC / TDC | 2006 |
| Traffic management, taking into account road widths | Identify areas of need | ECC | 2005-6 |

4.1 Play and recreation

4.1.1 What have we got?

- Resources Centre
- Methodist Church Hall
- Parks
- Beach



| | |
|--------------------------|--------------------------|
| Fig 31: Resources Centre | Fig 32: Methodist Church |
| Fig 33: Play Equipment | Fig 34: Beach |

4.1.2 What do we think?

- Beach should be kept clean
- Restrictions should be introduced to control dogs on the beach
- Sure Start Toy Library should be encouraged
- Dog bins should be introduced along the beach
- Play area in Seymour Road should be kept.
- Open spaces should be preserved and landscaped where appropriate
- Establishment of additional children's play facilities should be encouraged
- Beach should be promoted as a tourist attraction
- Golf course is a good local facility
- Beach should be protected from erosion
- Dogs should be banned from the beach
- Natural beach protection should be introduced e.g. grasses

4.1.3 What needs to happen?

| Objective | Action | Who | When |
|---|---|---|--------------------|
| Clean beach | Thorough Beach Clean | TDC Environmental Services | 2005 |
| | Local Beach Clean | Jaywick Residents (co-ordinated by Forum or Green Team) | 2005 |
| Control dogs on beach | Impose restrictions | TDC Environmental Services | Autumn 2005 |
| | Encourage responsible dog ownership (publicity) | Jaywick Forum | Ongoing |
| Encourage Surestart Toy Library | Promotion | Surestart | Ongoing |
| Dog bins on beach | Review possible sites | TDC Environmental Services | Spring 2005 |
| Retain play area in Seymour Road | 'Use it or lose it' | Local Residents | Ongoing |
| Preserve open spaces | Recognition at planning stage | TDC Planning | Ongoing |
| Encourage establishment of children's play facilities | Local Needs Survey | Surestart Jaywick Forum | Spring/summer 2005 |
| Promote beach as a tourist attraction | Publicity | TDC Leisure Services | Ongoing |
| Value golf course | 'Use it or lose it' | Local Residents | Ongoing |
| Protect beach from erosion | Monitor | Environment Agency | Ongoing |
| | Introduce natural beach protection (e.g. plant grasses) | Green Team | 2005 |

4.2 Environmental / green

4.2.1 What have we got?

- Parks and open space
- Recycling facilities

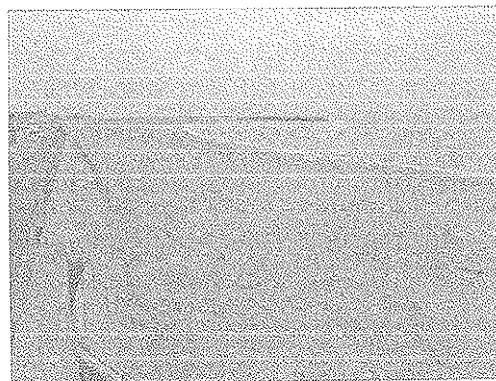


Fig 35: Recycling facilities | Fig 36: Beach

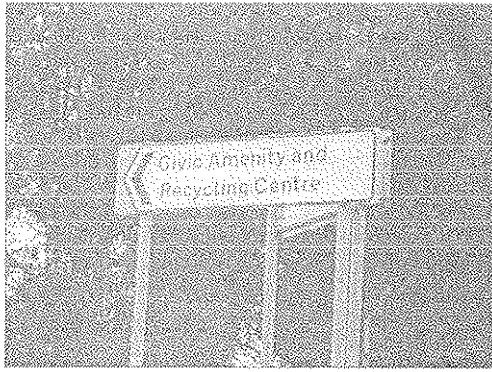


Fig 37: Civic amenity Site



Fig 38: Green Space

4.2.2 What do we think?

- Abandoned cars should be removed
- Fly tipping should be stopped
- Pest control should be monitored in and around the dykes
- Sewage outlets should be directed away from the beach
- Dykes should be kept clear
- Open spaces should be protected and maintained
- Roadsides should be improved visually
- Rubbish maintenance should be enforced, e.g. ensure collection is comprehensive
- Drainage should be upgraded
- Leisure walkways / footpaths should be protected and maintained
- Maintaining domestic gardens should be encouraged (Jaywick in Flower)
- Wildlife should be encouraged by clearing / developing landscapes, e.g. planting wild flowers
- Fencing and boundaries should be encouraged
- Sea defences should be implemented
- Land in Lotus Way owned by Guinness Trust should be developed
- Undeveloped sites should be promoted for shops



Fig 39: Fly-tipping



Fig 40: Domestic Gardens

4.3 What needs to happen?

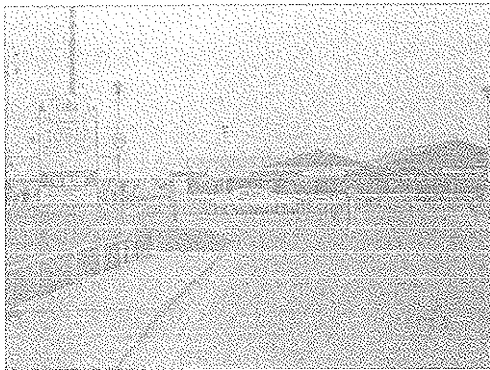
| Objective | Action | Who | When |
|---|---|--|--------------------|
| Remove abandoned cars | | Essex Police TDC – Environmental Health | Ongoing |
| Stop fly tipping | Enforcement / prosecution | TDC Environmental Services | Ongoing |
| | Encourage residents to report incidents | Jaywick Forum | Ongoing |
| Monitor pest control in and around dykes | Monitoring and survey work | TDC Environmental Services | Ongoing |
| Direct sewerage outlets away from beach | | Environment Agency | 2006 |
| Clear dykes | | Environment Agency | 2005 |
| Protect and maintain open spaces | Respect by local people | Local Residents Green Team | Ongoing |
| | Influence at planning stage | TDC Planning | Ongoing |
| Improve visual appearance of roadsides | | ECC | 2005 |
| Enforce rubbish maintenance | | TDC Environmental Services Onyx | 2005 |
| Upgrade drainage | | ECC | 2006 |
| Protect leisure footways and pathways | 'Use it or lose it' | Local Residents | Ongoing |
| | | Countryside Agency Green Team | Ongoing Ongoing |
| Encourage maintenance of domestic gardens | Jaywick in Flower | | |
| Encourage wildlife | Clear / develop landscapes – plant wild flowers | Green Team | Commence 2005 |
| Encourage fences and boundaries to be denoted | Influence at planning stage | TDC Planning | Ongoing |
| Implement sea defences | | Environment Agency | 2006-7 |
| Develop land in lotus way | Consideration at planning stage | TDC Planning | 2006 |

5 Local Economy

5.1 Local Businesses

5.1.1 What have we got?

- Shops and other retail businesses
- Enterprise Centre



| | |
|----------------------------|--------------------------------|
| Fig 41: Caravan Park | Fig 42: Enterprise Centre |
| Fig 43: Shopping Promenade | Fig 44: Jaywick Lane Farm Shop |

5.1.2 What do we think?

- Local shops and cafes should be covered by CCTV to discourage vandalism
- Facilities like the Jaywick Lane Farm Shop should be encouraged
- Public Houses should be to the standard of the Three Jays e.g. good parking facilities.
- A variety of retailers should be encouraged e.g. the Tudor Parade shops.

5.2 What needs to happen?

| Objective | Action | Who | When |
|--|----------------------------------|---------------------------------|---------------|
| CCTV | Investigate opportunity and need | TDC – Community Services / CDRP | 2005-6 |
| Encourage facilities like Jaywick Lane Farm Shop | 'Use it or lose it' | Local Residents | Ongoing |
| | Consideration at planning stage | TDC Planning | Ongoing |
| Raise standard of Public Houses | Parking | Landlords TDC Planning Dept | Ongoing |
| Encourage a variety of retailers | | TDC Planning Dept | Commence 2005 |

**Appendix 1
Complete Action Plan**

| Buildings | | | |
|--|---|--|---|
| Objective | Action | Who | When |
| Removal of derelict buildings | Demolition orders | TDC Environmental Services | Commenced June 2004; ongoing |
| Upgrading buildings | Council – statutory responsibility Private owned – funding information | TDC Housing Home Improvement Agency Landlords | Ongoing |
| Upgrading buildings | TDC is administering Major Works Assistance grants for Private Sector Housing, to make homes fit for habitation. Interest free loans of up to £20,000 are available. (JRS 3.1; Sept 2003) | TDC as administrator | Already commenced. Ongoing. |
| All buildings to adhere to regulations | Enforcement of building regulations. (Supported by JRS 4.2; Sept 2003) | TDC Planning | Ongoing |
| No caravans parked on public roads | Removal of caravans from <i>public</i> roads / provision of long-term parking | TDC | Ongoing |
| Maintaining local seafront character | Recognition at planning stage | TDC Planning | Revised Local Plan |
| New development to reflect local character | Recognition at planning stage | TDC Planning | Revised Local Plan |
| Street Furniture | | | |
| Objective | Action | Who | When |
| More Bus shelters | Review of current positioning / confirm desired location for additional shelter(s) | Community & RCCE | June 2005 |
| More Bus shelters | Introduce shelter in new location, preferably on Spine Road | ECC/TDC | Shelters erected by Adshel, ¾ through 2 year contract. Likely to be negotiated in next contract period. |
| Pedestrian crossings | Review of specific site(s) of need | Community & RCCE | June 2005 |
| Pedestrian crossings | Consider / Introduce new crossing or alternative road safety measures at Crossways junction | ECC/TDC | 2005 – 2006 |
| Addition of seating and benches | Review of current positioning | Community & RCCE | June 2005 |

| | | | |
|---------------------------------|---|--|-------------|
| Addition of seating and benches | Consider / Introduce new seating | TDC Technical and Procurement | 2005 – 2006 |
| Reduction in litter | Provision of bins | TDC: Environmental Health | Autumn 2005 |
| Reduction in litter | Supporting litter picking | Jaywick Forum Green Team TDC Environmental Services | Ongoing |
| Cycle paths | Identify potential routes | Jaywick Residents RCCE ECC | Summer 2005 |
| Lighting on footpaths | Review of current positioning | ECC / TDC | Spring 2005 |
| Lighting on roadways | TDC / ECC Transportation and Infrastructure Scoping Review | ECC / TDC | 2006 – 16 |
| | Explore other options | Community & RCCE | Ongoing |
| Removal of overhead powerlines | Replacing overhead cables underground | Service Providers Electricity de France | 2006 |
| Maintenance of road signs | Directional road signs | ECC | Ongoing |
| Maintenance of road signs | Road name signs (£120 / sign) | TDC | 2005-6 |

Parking

| Objective | Action | Who | When |
|--------------------------------|--|-------------------------------|--------------------|
| Reduction of on-street parking | Enforcement of parking restrictions | TDC Technical and Procurement | Ongoing |
| No cars parked illegally | Enforcement of parking restrictions | TDC Technical and Procurement | Ongoing |
| Carparks to high standard | Resurfacing carparks | TDC Technical and Procurement | Autumn 2005 |
| Signposting carparks | Review of current | TDC Technical and Procurement | Summer/Autumn 2005 |
| Parking for local people | Marked Resident only parking | TDC Technical and Procurement | 2006 |
| Pay and Display car parks | Introduction of Pay and display carparks | TDC Technical and Procurement | 2006 |

Services and Facilities

| Objective | Action | Who | When |
|---|---|---|-------------|
| Public toilets at high standard | Maintenance of public toilets | <i>Need to identify ownership</i> | Summer 2005 |
| Retaining Bishop's Park school building for community use | New building to become a joint service centre | Partnership supported by central government | Ongoing |
| Jaywick recycling facilities | Creation of additional facilities | TDC Environmental Services | 2006 |
| Screened landscaping utilities | Screening landscaping utilities | Green Team | 2006 |
| Second Health Centre | Undertake needs assessment | Tending PCT | 2007 |

Roads and Access

| Objective | Action | Who | When |
|-----------|--------|-----|------|
|-----------|--------|-----|------|

| | | | |
|--|---|--|--|
| Maintenance of road surfaces / pavement surfaces | Adoption of roads by ECC | ECC | Ongoing |
| - " - | Recognition of need in ECC highways budget | ECC | Local Transport Plan 2006-10 |
| Enforcement of speed limits | Mobile speed safety checks | Essex Police | Ongoing |
| Access to the seafront | Review existing and potential access points (including disabled access) | Jaywick Residents supported by RCCE TDC Leisure | Summer 2005 |
| New roads should have adequate drainage | Consideration at planning stage | ECC / TDC | Ongoing |
| Additional bus stops | Review of existing stops and gaps in service provision | ECC to implement findings of review of local bus transport provision TDC | Ongoing Local Transport Plan 2006-10 (not priority) |
| Maintenance of footpaths | Review and monitoring scheme to be established | Current TDC inspection of existing adopted pathways Green Team to monitor and report to TDC | 3 monthly Ongoing |
| One-way systems | Consideration of new development at planning stage | TDC Planning | Ongoing |
| Double yellow lines to prevent parking at main junctions | | ECC / TDC | 2006 |
| Traffic management, taking into account road widths | Identify areas of need | ECC | 2005-6 |

Play and Recreation

| Objective | Action | Who | When |
|----------------------------------|---|---|-------------|
| Clean beach | Thorough Beach Clean | TDC Environmental Services | 2005 |
| - " - | Local Beach Clean | Jaywick Residents (co-ordinated by Forum or Green Team) | 2005 |
| Control dogs on beach | Impose restrictions | TDC Environmental Services | Autumn 2005 |
| - " - | Encourage responsible dog ownership (publicity) | Jaywick Forum | Ongoing |
| Encourage Surestart Toy Library | Promotion | Surestart | Ongoing |
| Dog bins on beach | Review possible sites | TDC Environmental Services | Spring 2005 |
| Retain play area in Seymour Road | 'Use it or lose it' | Local Residents | Ongoing |
| Preserve open | Recognition at | TDC Planning | Ongoing |

| | | | |
|---|---|---|--------------------|
| spaces | planning stage | | |
| Encourage establishment of children's play facilities | Local Needs Survey | Surestart Jaywick Forum | Spring/summer 2005 |
| Promote beach as a tourist attraction | Publicity | TDC Leisure Services | Ongoing |
| Value golf course | 'Use it or lose it' | Local Residents | Ongoing |
| Protect beach from erosion | Monitor | Environment Agency | Ongoing |
| - " - | Introduce natural beach protection (e.g. plant grasses) | Green Team | 2005 |
| Environmental / Green | | | |
| Objective | Action | Who | When |
| Remove abandoned cars | | Essex Police TDC – Environmental Health | Ongoing |
| Stop fly tipping | Enforcement / prosecution | TDC Environmental Services | Ongoing |
| - " - | Encourage residents to report incidents | Jaywick Forum | Ongoing |
| Monitor pest control in and around dykes | Monitoring and survey work | TDC Environmental Services | Ongoing |
| Direct sewerage outlets away from beach | | Environment Agency | 2006 |
| Clear dykes | | Environment Agency | 2005 |
| Protect and maintain open spaces | Respect by local people | Local Residents Green Team | Ongoing |
| - " - | Influence at planning stage | TDC Planning | Ongoing |
| Improve visual appearance of roadsides | | ECC | 2005 |
| Enforce rubbish maintenance | | TDC Environmental Services Onyx | 2005 |
| Upgrade drainage | | ECC | 2006 |
| Protect leisure footways and pathways | 'Use it or lose it' | Local Residents | Ongoing |
| - " - | | Countryside Agency | Ongoing |
| Encourage maintenance of domestic gardens | Jaywick in Flower | Green Team | Ongoing |
| Encourage wildlife | Clear / develop landscapes – plant wild flowers | Green Team | Commence 2005 |
| Encourage fences and boundaries to be denoted | Influence at planning stage | TDC Planning | Ongoing |
| Implement sea defences | | Environment Agency | 2006-7 |
| Develop land in lotus | Consideration at | TDC Planning | 2006 |

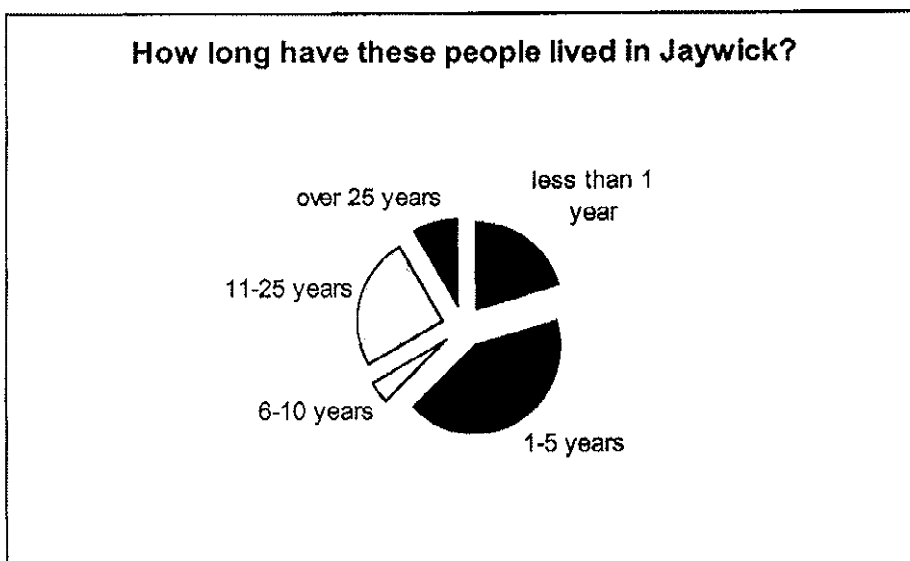
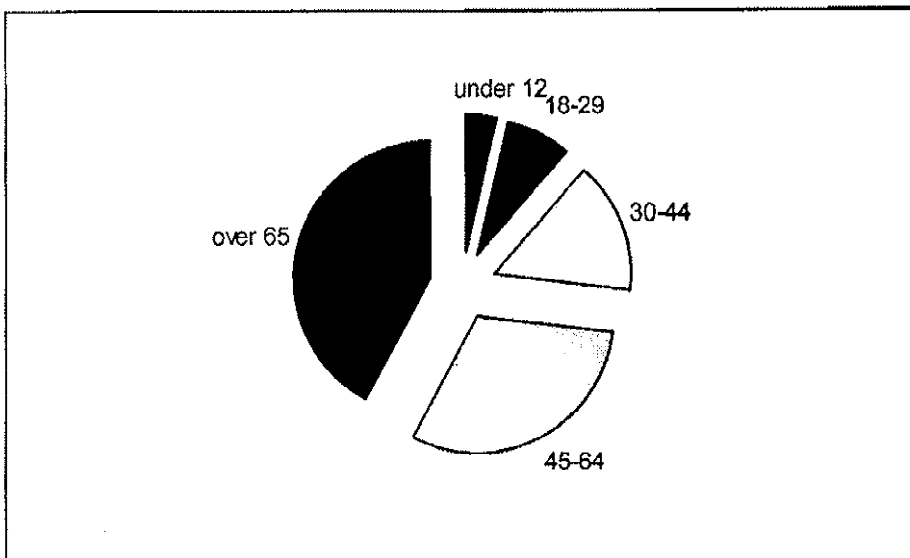
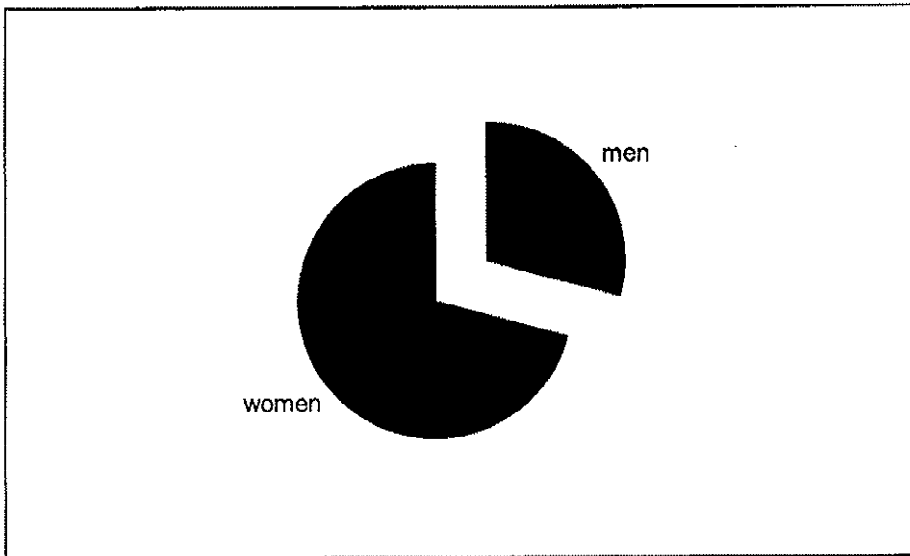
| | | | |
|--|----------------------------------|---------------------------------|---------------|
| way | planning stage | | |
| Local Businesses | | | |
| Objective | Action | Who | When |
| CCTV | Investigate opportunity and need | TDC – Community Services / CDRP | 2005-6 |
| Encourage facilities like Jaywick Lane Farm Shop | 'Use it or lose it' | Local Residents | Ongoing |
| - " - | Consideration at planning stage | TDC Planning | Ongoing |
| Raise standard of Public Houses | Parking | Landlords TDC Planning Dept | Ongoing |
| Encourage a variety of retailers | | TDC Planning Dept | Commence 2005 |

Appendix 2

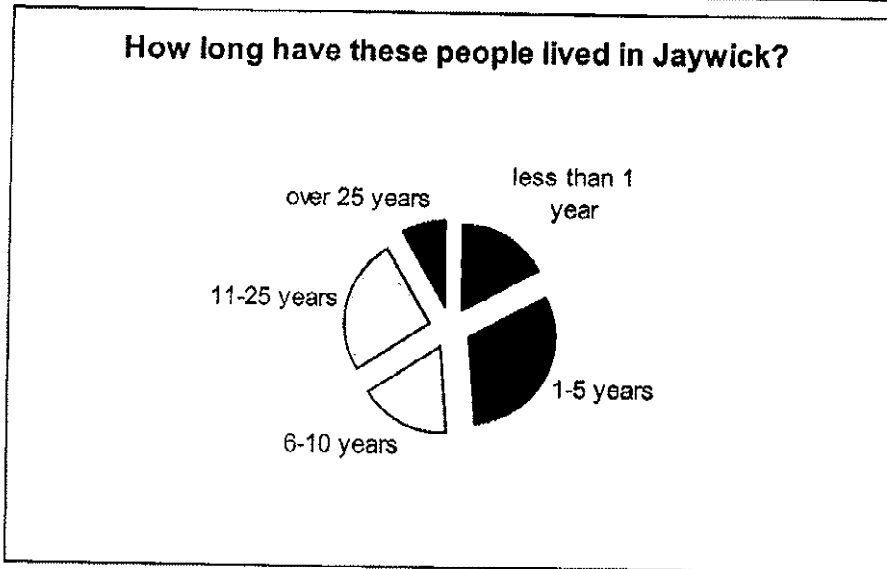
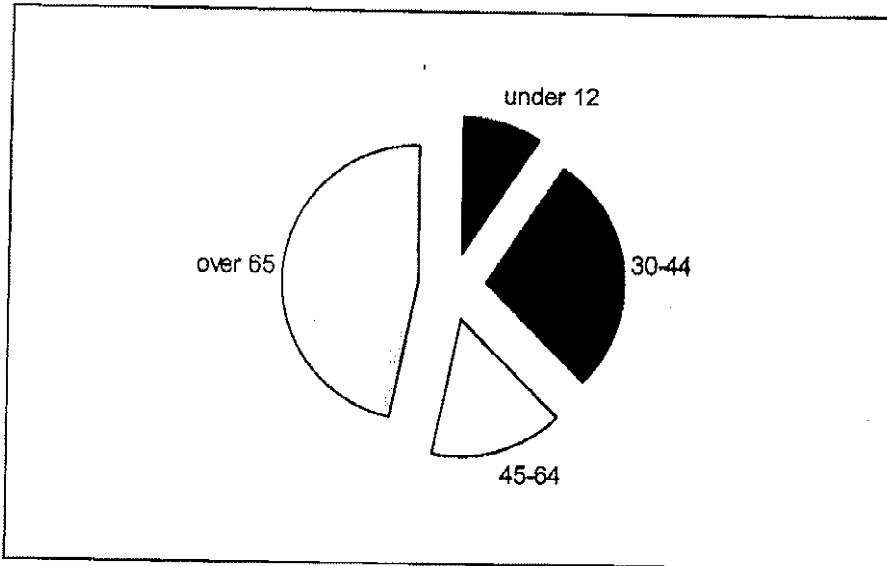
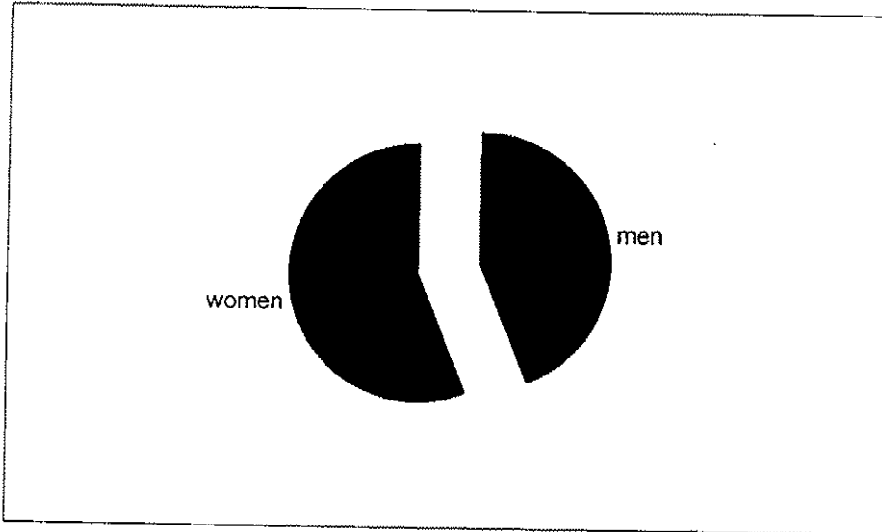
Attendance at events

| Date | Event | Numbers Attending |
|-------------|---|--------------------------|
| 26 Apr | Open Consultation: Drop-in Workshop | 26 |
| 17 May | VDS Workshop | 45 |
| 05 Jun | Exhibition and Consultation at Resources Centre (Brooklands) | <i>Unknown</i> |
| 05 Jun | Exhibition and Consultation at Methodist Church (Village/Tudor) | <i>Unknown</i> |
| 19 Jun | Action Planning Event | 41 |
| 29 Aug | Group Consultation: Little Pals / Indoor Bowls | 12 |
| 11 Sept | Group Consultation: Surestart Parents Forum | 18 |
| 16 Sept | Group Consultation: Stay and Play | 25 |
| 27 Sept | Open Consultation: 'Who's Who in Jaywick' event | 75+ |
| 12 Nov | Group Consultation: Surestart Drop-In | 6 |

26 April 2003 – analysis of attendees



17 May 2003 – analysis of attendees



Appendix 3

Abbreviations and Acronyms

| | |
|------|--|
| CDRP | Crime and Disorder Reduction Partnership |
| ECC | Essex County Council |
| JCF | Jaywick Community Forum |
| RAGs | Rural Activity Grant Scheme |
| RCCE | Rural Community Council of Essex |
| TDC | Tendring District Council |