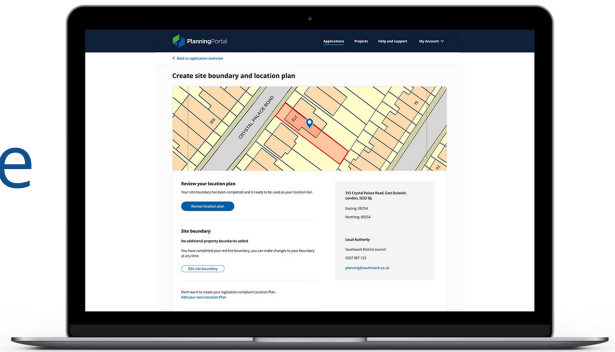




# Location plan feature explained.



**[On 2 May 2023, the Planning Portal service charge will increase to £53.33 +VAT \(£64 inc. VAT\).](#)**

This increase includes significant inflationary cost increases for hosting and transaction and banking fees over the last 12 months. These costs also cover their [new location plan feature](#), which includes [OS mapping royalties](#).

**This is the biggest improvement and process change to the Planning Portal since the introduction of the payment service in 2018.**

---

## **WHY** is this happening:

- Location plans are the biggest cause of invalid planning applications (on average, 50% are invalid on receipt, with 22% due to incorrect or incomplete location plans)
- These high levels of invalidation put pressure on the Local Authority's resources that are needed to register and validate applications.
- Did you know that Local Authorities currently duplicate workload by having to re-plot all location plans manually into their systems?

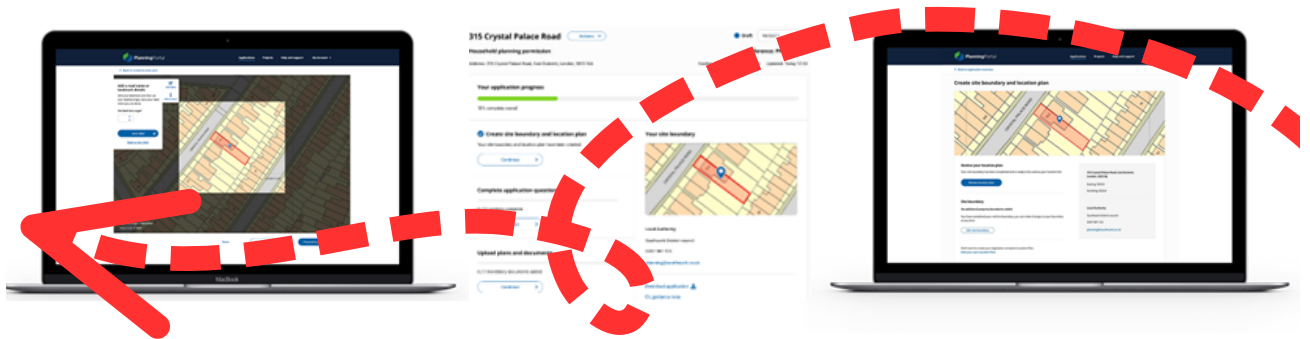
**[This is why the Planning Portal is introducing its new location plan feature - to improve the planning process.](#)**

## **HOW** is this happening:

- The Planning Portal will include the [new location plan feature](#) embedded into the application service
- You will be able to draw your boundary and create a location plan that checks against requirements and complies with planning legislation.
- You will be able to upload your own file if you wish, and download the completed location plan for your records.

- When submitted, the Local Authority receives a location data file that can be automatically uploaded into their systems and displayed in their online planning registers.

**These changes will aid in the delivery of the government's digital planning reforms - encouraging 'data, not documents'**



## THE BENEFITS to you:

**This tool will;**

- Be simple and easy to use
- Plot a red line boundary (by snapping or manual drawing)
- Give you the option to draw a blue line boundary to show owned adjoining land or property
- Enable you to add labels to identify road names or landmarks
- Enable you to preview and edit plans prior to submission
- Use legislatively correct and authoritative Ordnance Survey mapping data
- Allow you to access the location plan PDF and data files after you have submitted the application
- Help improve validation by using 'data', not 'documents'
- Improve efficiency by integrating with Local Authority systems

## THE BENEFITS for the future of planning:

- This is the building block for improving spatial planning to join up development management and local plan policy - linking site to constraints and data
- Integration with DLUHC's national map of planning data platform: [www.planning.data.gov.uk](http://www.planning.data.gov.uk)
- Simplifying planning, information gathering and research

## Find out more:

- [Location plan feature Overview video](#)
- [Location plan feature – full walk-through video](#)
- [Sign up and attend our webinar series](#)


---

---

Your input helps the Planning Portal to work better for you and your customers.

**Get in touch today:**

 [support@planningportal.co.uk](mailto:support@planningportal.co.uk)

 0333 323 4589

