

T E N D R I N G  
D I S T R I C T C O U N C I L

L O C A L  
D E V E L O P M E N T  
S C H E M E

2 0 0 5 - 2 0 1 0



## CONTENTS

	<b>Page</b>
Explanation of main terminology used	3
1. Introduction	5
2. Transitional Arrangements	6
3. Schedule of proposed Documents	11
4. Timetable	18
5. Profiles of each Document	20
6. Supporting Statements	32

## A helpful guide to the main terminology used in this document:

### **Local Development Framework (LDF)**

It is the overall name for the portfolio of Documents that Tendring District Council will produce. It will comprise of Local Development Documents, the Local Development Scheme and the Annual Monitoring Report.

### **Local Development Documents (LDD)**

This is the name for the two main types of planning documents, which are:

- **Development Plan Documents (DPDs)**

The policies in the **DPDs** will be given primacy when making decisions on planning applications. They are statutory planning documents that the Council must produce and they include:

- **A Core Strategy DPD** containing the district's spatial vision, a set of objectives and a set of policies for delivering the strategy.
- **Allocations DPD** where land is allocated for specific uses e.g. housing and employment.
- **A Proposals Map**, which illustrates all the policies and proposals contained in the **DPD** on an Ordnance Survey map base. The Proposals Map will be updated every time a LDD with graphical expressions is adopted.
- **Area Action Plans**, which provide the policies and proposals for areas undergoing significant changes or are to be subject to strong conservation policies.

All of these documents will be subject to public consultation and examination by a Government appointed Inspector.

- **Supplementary Planning Documents (SPDs)**

These documents will elaborate on the policies set out in the **DPDs**, providing additional and supporting details. The public will also be consulted on these documents, but they will not be examined.

- **Statement of Community Involvement (SCI)**

This is the document that will set out how the Council intends to achieve community consultation and involvement throughout all stages.

### **Local Development Scheme (LDS)**

The LDS is a starting point for the community since this is the first document to be produced and it sets out the content and timetable for each of the documents, that will eventually make up the Local Development Framework.

### **Annual Monitoring Report (AMR)**

This is an annual report produced by the Council to show the progress of the LDF.

### **Sustainability Appraisal (SA) & Strategic Environmental Assessment (SEA)**

Sustainability Appraisal helps Tendring District Council to fulfil the objective of contributing to the achievement of sustainable development when preparing Local Development Documents. When preparing the Re-deposit Draft Local Plan and Local Development Documents Tendring must also conduct an environmental assessment in accordance with the requirements of the European Directive 2001/42/EC on the effect that the plans may have on the environment. This is called a Strategic Environmental Assessment (SEA) or a SEA Directive.

## 1. Introduction

The new Planning and Compulsory Purchase Act (2004) came into force on 28 September 2004. The Act aims to simplify the planning system, with major changes to be introduced over the next few months/years. The new planning legislation stipulates that every Local Planning Authority must submit a Local Development Scheme by 28<sup>th</sup> of March 2005. This document is the Local Development Scheme for the Tendring District (known as the LDS) and effectively forms the work programme for the Council on Planning Policy from 2005 to 2009.

In short, the LDS sets out all the documents that Tendring District Council is proposing to produce as part of the new Local Development Framework (LDF). It also provides a timetable for the preparation and review of each of the planning documents that will be relevant for the district. The LDS is therefore the starting point for the local community to find out what the current planning policies for the Tendring District are. It also indicates the stages involved in processing the existing Replacement Local Plan through to adoption and commencement of the new Local Development Documents (LDDs) that will eventually replace the existing Local Plan. The timetable set out in this document takes into account the Council's constitutional arrangements for handling decisions on strategic planning issues of this nature.

The LDS for Tendring District will be submitted to the Secretary of State, via the Government Office for approval. The Government Office will then consider it, having regard to:

- document production, especially the development of the evidence base;
- whether any of the proposed SPDs should be prepared as DPDs;
- whether the time-scales for the preparation of the proposed documents are realistic;
- whether there are any obvious omissions from the scheme – i.e. should Tendring identify any other type of development documents in the scheme; and
- whether Tendring has identified the correct priorities and resources needed for the preparation of the various documents.

When preparing development plan documents, Tendring District Council will have regard to:

- National policies and guidance;
- The Regional Spatial Strategy for the Tendring District and surrounding region;
- The Community Strategy which applies to the area covered by the document under production;
- Other local development documents adopted by the Council, and
- Available resources.

The preparation process can be divided into four stages, which are:

- Pre-production: survey and evidence gathering leading to decision to include a development plan document in the local development scheme;
- Production: preparation of preferred options in consultation with the community, formal participation on these, and preparation and submission of the development plan document in light of the representations on the preferred options;
- Examination: the independent examination into the soundness of the plan; and
- Adoption: the binding report and adoption.

The Council is committed to the programme set out in this LDS because of the benefits that an up-to-date and effective development plan and supplementary documents can have. The LDS will be reviewed and rolled forward on an annual basis to take account of progress on the programme and monitoring both of the evidence base and adopted policies.

The LDS is publicly available from the Council Offices or can be viewed on the Council's web-site at [www.tendringdc.gov.uk](http://www.tendringdc.gov.uk). The Council is confident that this document will provide a valuable starting point to assist with the community's understanding of and involvement in the new planning system.

## **2. Transitional Arrangements**

The new Planning Act allows for Local Planning Authorities such as Tendring that are in the process of preparing a new Local Plan to continue under transitional arrangements until adoption of the Plan. Tendring produced the First Deposit Draft Replacement Local Plan in May 2004 and is aiming to consult on the Re-deposit draft of the Plan by the end of 2005. Once the Replacement Local Plan is adopted it will replace the adopted Tendring District Local Plan, 1998. The full timetable for the Replacement Local Plan is set out in section 4 of this document.

As a consequence of preparing a Local Plan that will be adopted after 21<sup>st</sup> July 2006, it is necessary for the Council to undertake a retrospective Strategic Environmental Assessment in accordance with the relevant regulations. To this end the Council have engaged Consultants and this work is currently underway and will be available and influence the preparation of the re-deposit draft to be published later this year.

The Planning and Compulsory Purchase Act (2004) also states that whatever constitutes a Development Plan in the area will retain Development Plan status for three years from commencement of the new Act. Saved Plans for the Tendring District therefore include:

- The adopted Tendring District Local Plan (April 1998);

- The Tendring Replacement Local Plan, First Deposit Draft (May 2004);
- The adopted Essex & Southend – on – Sea Replacement Structure Plan, (April 2001);
- The Essex Minerals Local Plan (November 1996), and
- The Essex Minerals Local Plan Second Review, First Deposit Draft (November 2003)
- The Essex & Southend-on-Sea Waste Local Plan (September 2001)

### **2.1 Planning Documents: period 2005 – 2007**

The Council will continue to produce a Replacement Local Plan. During this period, the Council will also produce supplementary material called Supplementary Policy Interim Documents (SPIDs). Production of these documents will result in many of the objections made against the various policies during the First Deposit Consultation period being addressed. SPIDs will undergo a consultation process as prescribed for all Supplementary Planning Documents within the Planning and Compulsory Purchase Act, 2004 but initially will be approved by the Council for use in Development Control decision making only. SPIDs will be linked to saved policies in the Replacement Local Plan and after adoption of the Replacement Local Plan the Council proposes to adopt these documents as SPDs.

Under the transitional arrangements the Council proposes to produce the following documents:

- Tendring District Replacement Local Plan (with Proposals Maps)
- Annual Monitoring Report

Supplementary Planning Documents:

The following documents will be prepared which will amplify specific policies in the Adopted Replacement Local Plan:

- Affordable Housing SPD
- Open Space SPD
- Protection of Employment Land SPD
- Planning Briefs and Master Plans for specific allocated sites.

Following adoption of the Replacement Local Plan the Plan will be saved for three years. The Council has to identify policies within the Replacement Local Plan, which are likely to be compliant with the development plan document principles and which the Council wishes to continue beyond the three year saved period. However, due to uncertainty about the policy content of the emerging Local Plan, which will replace the Adopted Local Plan of 1998, a full listing of policies can not be shown at this stage. After receiving the Inspector's binding report, the LDS will be amended to include a comprehensive list of policies together with a programme that will set out when the council anticipates these policies to be replaced, deleted or merged into LDDs.

The Council has an existing list of saved and adopted SPGs supporting saved policies in the Adopted Local Plan (April 1998) and Essex and Southend Structure Plan (2001). These SPGs include:

- Schools Contributions from Residential Developments (2004)
- Vehicle Parking Standards (2001)
- Essex Design Guide for Residential & Mix-use development (1997)<sup>1</sup>
- Crime Reduction through Environmental Design
- Accessible & Inclusive Environments
- Designing for Accessibility: An essential guide for public buildings
- Nature Conservation (1996)
- Essex Historic Towns (1999)
- Essex Golf Report
- Enabling Development (English Heritage)
- Colne Estuary Boating Study (MAYA)
- Walton Mere Design Brief
- James & Stone Shipyard, Brightlingsea Planning Brief (1998)
- Cann Hall Constable Avenue, Clacton-on-Sea, Design & Development Brief (1999)
- Harwich Town Station Design Brief (2001)
- Land North of Oakwood Business Park
- Timberfields, Harwich Planning Brief

After adoption of the Replacement Local Plan, these documents will continue to be applied. However, these documents where not related to a save policy in the Replacement Local Plan will then be applied as Council Guidance and will not have the same weight as accorded to SPGs/SPDs.

## **2.2 Local Development Documents: After adoption of the Replacement Local Plan 2007 – 2009**

This Council has further considered what Development Plan Documents are to be produced as part of the LDF following adoption of the Tendring District Replacement Local Plan. Each LDD that the Council proposes to produce is explained in detail under section 5 of this document. The LDDs are:

- Statement of Community Involvement
- Development Plan Documents (LPDs):
  - Core Strategy & Development Control Policies
  - Harwich Area Action Plan
  - Jaywick Area Action Plan

---

<sup>1</sup> Essex County Councils is producing a high density supplement to the Essex Design Guide (EDG) for Residential and Mixed Use Areas. This is being produced as it was recognised that new policies and strategies have emerged since production of the EDG. The proposed timetable for the reprint/reviewed EDG and the draft Urban Place Supplement is June 2005.

- Site Specific Allocations: Residential and Employment
- Proposals Maps

An updated Proposals Map will be produced and revised at the same time as all DPDs . This is to always illustrate geographically the application of the policies and proposals in accordance with Regulations 9(b).

Consultation of the two Area Action Plans for Harwich and Jaywick follow the process as required by the SCI in advance of the SCI consultation. When the community is consulted on the preferred options for the site specific allocations for housing and employment, the Council will ensure that the strategic context (provided by the Core Strategy) is in place.

An Annual Monitoring Report (AMR) will also be produced as a component of the LDF. This report will review actual plan progress compared with the targets and milestones for the local development document preparation set out in the Gantt Chart (timetable, section 4).

The relationship between the various documents contained within the LDF folder are illustrated in Diagram 1 whilst table 1 sets out a schedule of all the proposed documents and new LDDs together with their role, chains of conformity and the main milestones to adoption. In terms of the timetable for these documents, the Gantt Chart under section 4 plots the milestones for the production process against a timeline. During the evidence gathering stage the focus of work will be on drawing up and developing the evidence base, considering objectives and considering other strategies such as community strategies in relation to the development plan document. Commencement of preparation of the document will start when consulting on the 'issues and options' paper (regulation 25). The milestones include:

- Evidence gathering and scoping sustainability appraisal
- Commencement of preparation of document : Pre-submission consultation - preparing issues and alternative options and the initial sustainability appraisal report (Regulation 25);
- Pre-submission public participation: preferred options document and the formal sustainability appraisal report (Regulation 26)
- Representations on Preferred Options: addressing representations to the preferred options document (Regulation27)
- Preparation of Submission of Document: preparing the submission development plan document and need for amendments to the sustainability report
- Submission to the Secretary of State (Regulation 28)
- Representations on submitted document (Regulation 29)
- Pre-Examination consideration of Representations (Regulation 31 and 32)
- Pre-examination meeting
- Independent Examination (Regulation 34)
- Receive the Inspector's binding Report
- Adoption of Document (Regulation36)

All of the documents included in the LDS will not need to achieve all of the milestones. For example the SCI is a local development document but is not subject to sustainability appraisal. Also, the SCI sets out Tendring District Council's policy for involving the community in accordance with Regulations 25 and 26 for development plan documents whilst Regulation 17 is applicable to supplementary planning documents. In addition, a SPD can move directly from the evidence gathering stage to preparing the draft document and does not require formal examination before adoption of the document.

At this stage, many of the key milestones identified for the LDDs might appear vague but this is due to the fact that these milestones will be reached at a considerably later time. A Service Level Agreement will at a later date be agreed with the Planning Inspector and will provide further clarity regarding the time scales of these documents. Subsequently the LDS will be amended and these agreed dates would then be incorporated into a revised LDS.

### 3. Schedule of Proposed Documents:

Table 1.

Document Title	Status	Role and Content	Geographical coverage	Chain of conformity	Commencement of preparation of document: Pre-submission consultation	Pre-Submission public participation: preferred options document.	Date for submission to SofS	Date for Examination	Proposed Date for adoption
Tendring District Replacement Local Plan		A Document to guide and promote development in accordance with development control policies.	Tendring District	General conformity with Essex and Southend-on Sea Replacement Structure Plan (April 2001).	N/A	Publication of Re-deposit Draft: November and December 2005 <sup>2</sup> .	N/A	August - December 2006	June 2007
Annual Monitoring Report	N/A	This document reviews the various documents' progress against the milestones as set out in the LDS.	N/A	N/A	N/A	N/A	Annually Dec 2005	N/A	N/A

<sup>2</sup> This date will depend on the timing and outcome of the Secretary of State's decision on the Bathside Bay Inquiry.

Document Title	Status	Role and Content	Geographical coverage	Chain of conformity	Commencement of preparation of document: Pre-submission consultation	Pre-Submission public participation: preferred options document.	Date for submission to SofS	Date for Examination	Proposed Date for adoption
SPD: Affordable Housing	Not DPD	To provide guidelines on the provision of Affordable housing as part of residential development.	Tendring District	Conformity with the saved Affordable Housing policies (HG4 & HG5) included in the Adopted Replacement Local Plan.	December 2005 – February 2006	Consultation on SPID will be between March – April 2006.	N/A	N/A	After adoption of the Replacement Local Plan, the Affordable Housing SPID will be adopted as a SPD during May-June 2007.
SPD: Open Space	Not DPD	This document will set out the Council's standards for the provision of public open space and children's play areas within residential developments.	Tendring District	Conformity with the saved COM 6 policy included in the Adopted Replacement Local Plan.	April – May 2005	Consultation on this SPID will be in June - July 2005	N/A	N/A	After adoption of the Replacement Local Plan, the Open Space SPID will be adopted as a SPD during May - June 2007.

Document Title	Status	Role and Content	Geographical coverage	Chain of conformity	Commencement of preparation of document: Pre-submission consultation	Pre-Submission public participation: preferred options document.	Date for submission to SofS	Date for Examination	Proposed Date for adoption
SPD: Protection of Employment land	Not DPD	This document will support the policy relating to retention of employment sites. It will provide guidelines for when development results in the loss of employment land and compensation has to be made for the loss of employment opportunities.	Tendring District	Conformity with the saved policy ER3 included in the Adopted Replacement Local Plan.	June – August 2007	September – October 2007	N/A	N/A	After adoption of the Replacement Local Plan, this document will be adopted as a SPD in January – February 2008.

Document Title	Status	Role and Content	Geographical coverage	Chain of conformity	Commencement of preparation of document: Pre-submission consultation	Pre-Submission public participation: preferred options document.	Date for submission to SofS	Date for Examination	Proposed Date for adoption
Planning Briefs/ Master Plans for allocated sites <ul style="list-style-type: none"> <li>• Thorpe le Soken</li> <li>• Mistley</li> </ul>	Not DPD	These documents will provide guidance and a master plan for all the sites involved.		Conformity with the relevant saved policy included in the Adopted Replacement Local Plan.	August – October 2007	November – December 2007	N/A	N/A	March-April 2008
Statement of Community Involvement	N/A	Document setting out standards and approach to involving stakeholders and community in the production of the LDF.	Tendring District	N/A	October 2006	November – December 2006	March 2007	July – August 2007	November 2007

Document Title	Status	Role and Content	Geographical coverage	Chain of conformity	Commencement of preparation of document: Pre-submission consultation	Pre-Submission public participation: preferred options document.	Date for submission to SofS	Date for Examination	Proposed Date for adoption
Core Strategy and Development Control Policies	DPD	Sets out the vision, objectives and strategy for the spatial development of the area and will provide the framework and development control policies for planning applications.	Tendring District	General conformity with RSS 14 and national PPSs All other LDDs to be in conformity with Core Strategy.	April-June 2007	July – September 2007	May – June 2008	February – April 2009	August – October 2009

<b>Document Title</b>	<b>Status</b>	<b>Role and Content</b>	<b>Geographical coverage</b>	<b>Chain of conformity</b>	<b>Commencement of preparation of document: Pre-submission consultation</b>	<b>Pre-Submission public participation: preferred options document.</b>	<b>Date for submission to SofS</b>	<b>Date for Examination</b>	<b>Proposed Date for adoption</b>
Site Specific Allocations: Housing & Employment Sites	DPD	To identify and allocate sufficient land for residential and employment development in order to provide for the housing and employment needs within the district.	Tendring District	Core Strategy	January – March 2008	April - June 2008	February – May 2009	January – March 2010	July 2010
Harwich Area Action Plan	DPD	Sets out guidelines and standards for the design of new development in Harwich.	Harwich.	Conformity with the relevant saved policy included in the Adopted Replacement Local Plan.	September - November 2006	December 2006 - February 2007	October 2007 - November 2008	July - September 2008	January – March 2009

Document Title	Status	Role and Content	Geographical coverage	Chain of conformity	Commencement of preparation of document: Pre-submission consultation	Pre-Submission public participation: preferred options document.	Date for submission to SofS	Date for Examination	Proposed Date for adoption
Jaywick Area Action Plan	DPD	Sets out guidelines and standards for the design of new development in Jaywick.	Jaywick	Conformity with the relevant saved policy included in the Adopted Replacement Local Plan.	September – November 2006	December 2006 - February 2007	October 2007 – November 2008	July - September 2008	January - March 2009
Proposals Map	DPD	The map will illustrate all site specific allocations and proposals as well as site specific policies.			The proposals map will be kept up to date as the relevant documents are produced. An up to date proposals map will accompany the relevant DPDs when these documents are submitted.				

## 4. Timetable

### 4.1 Transitional Arrangements: Replacement Local Plan

Year	2005												2006												2007																																														
Month	J	F	M	A	M	J	J	A	S	O	N	D	J	F	M	A	M	J	J	A	S	O	N	D	J	F	M	A	M	J	J	A	S	O	N	D																																			
Tending Replacement Local Plan	Preparation	Preparation	Preparation	Preparation	Preparation	Preparation	Preparation	Preparation	Preparation	Preparation	Preparation	Public Participation	Public Participation	Public Participation	Public Participation	Public Participation	Public Participation	Public Participation	Public Participation	Public Participation	Public Participation	Public Participation	Public Participation	Pre-Examination meeting	Pre-Examination meeting	Pre-Examination meeting	Pre-Examination meeting	Pre-Examination meeting	Pre-Examination meeting	Pre-Examination meeting	Pre-Examination meeting	Pre-Examination meeting	Pre-Examination meeting	Pre-Examination meeting	Pre-Examination meeting	Examination	Examination	Examination	Examination	Examination	Examination	Examination	Examination	Examination	Examination	Examination	Examination	Inspector's Report	Inspector's Report	Inspector's Report	Inspector's Report	Inspector's Report	Inspector's Report	Inspector's Report	Inspector's Report	Inspector's Report	Inspector's Report	Inspector's Report	Inspector's Report	Adoption	Adoption	Adoption	Adoption	Adoption	Adoption	Adoption	Adoption	Adoption	Adoption	Adoption	Adoption



### 4.2 LDF

	2005												2006												2007												2008			
	J	F	M	A	M	J	J	A	S	O	N	D	J	F	M	A	M	J	J	A	S	O	N	D	J	F	M	A	M	J	J	A	S	O	N	D	J	F	M	A
Affordable Housing																																								
Open Space																																								
Protection of Employment Land																																								
Design briefs/ Master Plans for allocated sites.																																								
SCI																																								



## 5. Document Profiles:

<i>Document Detail</i>	
<i>Title of the Document</i>	<b>Tendring District Replacement Local Plan.<sup>3</sup></b>
<i>What is the main role of this document:</i>	To guide and promote development within the Tendring District according to land use policies
<i>Geographic area this document will cover:</i>	The whole of the Tendring District
<i>Status – Is it a Development Plan Document or not:</i>	Development Plan
<i>Chain of conformity:</i>	Adopted Essex and Southend on Sea Replacement Structure Plan (April 2001)
<i>Timetable:</i>	
<ul style="list-style-type: none"> <li>• <i>Examination and consideration of representations and assess against both the Strategic Environmental Appraisal and Sustainability Appraisal work.</i></li> </ul>	March – October 2005
<ul style="list-style-type: none"> <li>• <i>Start of Consultation &amp; Public Participation</i></li> </ul>	Redeposit Consultation period: November/ December 2005
<ul style="list-style-type: none"> <li>• <i>Consideration of representations and discussions with community and stakeholders</i></li> </ul>	January 2006 – May 2006
<ul style="list-style-type: none"> <li>• <i>Pre-Examination meeting</i></li> </ul>	June 2006
<ul style="list-style-type: none"> <li>• <i>Examination period</i></li> </ul>	August – December 2006
<ul style="list-style-type: none"> <li>• <i>Receipt of Inspectors binding Report</i></li> </ul>	April 2007
<ul style="list-style-type: none"> <li>• <i>Adoption &amp; Publication</i></li> </ul>	June 2007
<i>Arrangements for production:</i>	
<i>Which Department in Tendring DC will lead the process:</i>	Planning Policy Division within Regeneration, Planning and Community Services.
<i>Management Arrangements:</i>	Development Plan Manager
<i>Resources required:</i>	
<ul style="list-style-type: none"> <li>• <i>Internal</i></li> </ul>	Planning Policy Team <sup>4</sup> . Consultation and Input from other departments such as Housing, Leisure services, Regeneration etc as and when necessary
<ul style="list-style-type: none"> <li>• <i>External</i></li> </ul>	Various specialist consultants firms
<ul style="list-style-type: none"> <li>• <i>Approach to involving stakeholders &amp; community</i></li> </ul>	Re-deposit Stage Consultation.
<i>Review of Document:</i>	N/A

<sup>3</sup> Although the Local Plan does not form part of the LDF a document profile has been created for information purposes.

<sup>4</sup> The Planning Policy Team currently consists of a Development Plan Manager, a Principal Planning Officer, 3 Planning Officers, 2 Planning Technicians.

<i>Document Detail</i>	
<i>Name of the Document</i>	<b>Supplementary Planning Document: Affordable Housing</b>
<i>What is the main role of this document:</i>	To provide guidelines on the provision of Affordable housing as part of residential development. This document will give support to the Affordable housing policy that will be included in the Adopted Replacement Local Plan.
<i>Geographic area this document will cover:</i>	Tendring District
<i>Status – Is it a Development Plan Document or not:</i>	No
<i>Chain of conformity:</i>	Adopted Replacement Local Plan
<i>Timetable:</i>	
<ul style="list-style-type: none"> <li><i>Evidence gathering and scoping sustainability appraisal</i></li> </ul>	Production & Preparation of the document as a SPID will start in September – November 2005
<ul style="list-style-type: none"> <li><i>Preparation of Draft SPD</i></li> </ul>	December – February 2006
<ul style="list-style-type: none"> <li><i>Draft document and sustainability appraisal report issued for public participation</i></li> </ul>	This document will be consulted on as a SPID March - April 2006.
<ul style="list-style-type: none"> <li><i>Consideration of representations and discussions with community and stakeholders</i></li> </ul>	May – June 2006
<ul style="list-style-type: none"> <li><i>Adoption &amp; Publication</i></li> </ul>	After adoption of the Replacement Local Plan this document will be adopted as a SPD in May - June 2007.
<i>Arrangements for production:</i>	
<i>Which Department in Tendring DC will lead the process:</i>	Planning Policy Division within Regeneration, Planning and Community Services.
<i>Management Arrangements:</i>	Development Plan Manager
<i>Resources required:</i>	
<ul style="list-style-type: none"> <li><i>Internal</i></li> </ul>	Planning Policy Team, Housing Department and established Corporate Team.
<ul style="list-style-type: none"> <li><i>External</i></li> </ul>	Register Social landlord (partners)
<ul style="list-style-type: none"> <li><i>Approach to involving stakeholders &amp; community</i></li> </ul>	All key stakeholders will be consulted. This document will be adopted before the SCI is adopted and therefore the Regulations will be applied to the whole of the document.
<i>Review of Document:</i>	This document will be reviewed and amended if necessary in early 2007 after which it will be monitored on an annual basis and will then be subject of a review if the monitoring highlights such a need.

<i>Document Detail</i>	
<i>Name of the Document</i>	<b>SPD: Open Space</b>
<i>What is the main role of this document:</i>	This document will set out the Council's standards for the provision of public open space and children's play areas within residential developments. This document will be supplementary to the relevant policy in the Adopted Replacement Local Plan.
<i>Geographic area this document will cover:</i>	The Tendring District
<i>Status - Is it a Development Plan Document or not:</i>	No
<i>Chain of conformity:</i>	The Adopted Replacement Local Plan
<i>Timetable:</i>	
<ul style="list-style-type: none"> <li><i>Evidence gathering and scoping sustainability appraisal</i></li> </ul>	January – March 2005
<ul style="list-style-type: none"> <li><i>Preparation of draft SPD</i></li> </ul>	April – May 2005
<ul style="list-style-type: none"> <li><i>Draft document and sustainability appraisal report issued for public participation as required by Regulation 17.</i></li> </ul>	June – July 2005
<ul style="list-style-type: none"> <li><i>Consideration of representations and discussions with community and stakeholders</i></li> </ul>	August – September 2005
<ul style="list-style-type: none"> <li><i>Adoption &amp; Publication</i></li> </ul>	After adoption of the Replacement Local Plan this document will be adopted as a SPD in May – June 2007.
<i>Arrangements for production:</i>	
<i>Which Department in Tendring DC will lead the process:</i>	Planning Policy Division within Regeneration, Planning and Community Services.
<i>Management Arrangements:</i>	Development Plan Manager
<i>Resources required:</i>	
<ul style="list-style-type: none"> <li><i>Internal</i></li> </ul>	Planning Policy Team, Leisure Services and established Corporate team.
<ul style="list-style-type: none"> <li><i>External</i></li> </ul>	Stakeholders with relevant representations Town Parish Councils Local Sports and recreational groups.
<ul style="list-style-type: none"> <li><i>Approach to involving stakeholders &amp; community</i></li> </ul>	Consult with all the above mentioned stakeholders. This document will be adopted before the SCI is adopted and therefore the Regulations will be applied to the whole of the document.
<i>Review of Document:</i>	This document will be reviewed and amended if necessary in early 2007 after which it will be monitored on an annual basis and will then be subject of a review if the monitoring highlights such a need.

<i>Document Detail</i>	
<i>Name of the Document</i>	<b>SPD: Protection of Employment Land</b>
<i>What is the main role of this document:</i>	This document will support the policy relating to retention of employment sites. It will provide guidelines for when development results in the loss of employment land and compensation has to be made for the loss of employment opportunities.
<i>Geographic area this document will cover:</i>	Tendring District.
<i>Status - Is it a Development Plan Document or not:</i>	No
<i>Chain of conformity:</i>	The Adopted Replacement Local Plan.
<i>Timetable:</i>	
<ul style="list-style-type: none"> <li><i>Evidence gathering and scoping sustainability appraisal</i></li> </ul>	Production will start in March – May 2007
<ul style="list-style-type: none"> <li><i>Preparation of draft SPD</i></li> </ul>	June – August 2007
<ul style="list-style-type: none"> <li><i>Draft document and sustainability appraisal report issued for public participation as required by Regulation 17.</i></li> </ul>	Sept – October 2007
<ul style="list-style-type: none"> <li><i>Consideration of representations and discussions with community and stakeholders</i></li> </ul>	November – December 2007
<ul style="list-style-type: none"> <li><i>Adoption &amp; Publication</i></li> </ul>	January- February 2008
<i>Arrangements for production:</i>	
<i>Which Department in Tendring DC will lead the process:</i>	Planning Policy Division within Regeneration, Planning and Community Services.
<i>Management Arrangements:</i>	Development Plan Manager
<i>Resources required:</i>	
<ul style="list-style-type: none"> <li><i>Internal</i></li> </ul>	Planning Policy Team, Regeneration Team
<ul style="list-style-type: none"> <li><i>External</i></li> </ul>	Employment Stakeholders
<ul style="list-style-type: none"> <li><i>Approach to involving stakeholders &amp; community</i></li> </ul>	Consult all external stakeholders. Production on this document will commence prior to adoption of the SCI with regulation 17 consultation occurring before or at the same time as adoption of the SCI. Therefore the regulations will apply to Regulation 17 unless the SCI is adopted first in which case the SCI will apply at Regulation 17.
<i>Review of Document:</i>	It will be monitored on an annual basis and will then be subject of a review if the monitoring highlights such a need.

<i>Document Detail</i>	
<i>Name of the Document</i>	<b>Planning Briefs/ Master Plans</b>
<i>What is the main role of this document:</i>	These documents will provide guidance and a master plan for all the locations involved.
<i>Geographic area this document will cover:</i>	1. Thorpe-le-Soken Maltings and Station 2. Mistley Waterfront
<i>Status - Is it a Development Plan Document or not:</i>	SPD
<i>Chain of conformity:</i>	Site specific allocation sites documents; Adopted Tendring District Local Plan.
<i>Timetable:</i>	
<ul style="list-style-type: none"> <li><i>Evidence gathering and scoping sustainability appraisal report.</i></li> </ul>	May – July 2007
<ul style="list-style-type: none"> <li><i>Preparation of Draft SPD</i></li> </ul>	August – October 2007
<ul style="list-style-type: none"> <li><i>Draft document and sustainability appraisal report issued for public participation as required by Regulation 17.</i></li> </ul>	November – December 2007
<ul style="list-style-type: none"> <li><i>Consideration of representations and discussions with community and stakeholders</i></li> </ul>	January – February 2008
<ul style="list-style-type: none"> <li><i>Adoption &amp; Publication</i></li> </ul>	March – April 2008
<i>Arrangements for production:</i>	
<i>Which Department in Tendring DC will lead the process:</i>	Planning Policy Division within Regeneration, Planning and Community Services.
<i>Management Arrangements:</i>	Development Plan Manager
<i>Resources required:</i>	
<ul style="list-style-type: none"> <li><i>Internal</i></li> </ul>	Planning Policy Team
<ul style="list-style-type: none"> <li><i>External</i></li> </ul>	Landowners & Developers
<ul style="list-style-type: none"> <li><i>Approach to involving stakeholders &amp; community</i></li> </ul>	Consult with all stakeholders involved in accordance with Regulations until adoption of the SCI (Nov 2007) Adoption of the SCI might occur at same time as Regulation 26 in which case the SCI will be applied from that point forward.
<i>Review of Document:</i>	It will be monitored on an annual basis and will then be subject of a review if the monitoring highlights such a need.

<i>Document Detail</i>	
<i>Name of the Document</i>	<b>Statement of Community Involvement</b>
<i>What is the main role of this document:</i>	This document will set out how the community will be consulted on all the Planning Documents that the Council will prepare.
<i>Geographic area this document will cover:</i>	The Tendring District
<i>Status - Is it a Development Plan Document or not:</i>	No
<i>Chain of conformity:</i>	N/A
<i>Timetable:</i>	
• <i>Scoping</i>	September 2006
• <i>Preparation of draft SCI with consultation (Reg 25)</i>	October 2006
• <i>Public participation on draft SCI (Reg 26)</i>	November – December 2006
• <i>Representations on preferred options (Reg 27)</i>	January 2007
• <i>Preparation of submission statement</i>	February 2007
• <i>Submission of document to SofS</i>	March 2007
• <i>Representations on submitted document</i>	April 2007
• <i>Pre-examination consideration of representations</i>	May 2007
• <i>Pre-examination meeting</i>	June 2007
• <i>Examination period</i>	July- August 2007
• <i>Receipt of Inspectors binding Report</i>	September – October 2007
<i>Adoption &amp; Publication</i>	November 2007
<i>Arrangements for production:</i>	
<i>Which Department in Tendring DC will lead the process:</i>	Planning Policy Division within Regeneration, Planning and Community Services.
<i>Management Arrangements:</i>	Development Plan Manager
<i>Resources required:</i>	
• <i>Internal</i>	Planning Policy
• <i>External</i>	
• <i>Approach to involving stakeholders &amp; community</i>	
<i>Review of Document:</i>	It will be monitored on an annual basis and will then be subject of a review if the monitoring highlights such a need.

<i>Document Detail</i>	
<i>Name of the Document</i>	<b>Core Strategy &amp; Development Control Policies</b>
<i>What is the main role of this document:</i>	This document will provide the vision, objectives and strategy for the spatial development of the area and will provide framework and development control policies for planning applications.
<i>Geographic area this document will cover:</i>	The Tendring District
<i>Status - Is it a Development Plan Document or not:</i>	DPD
<i>Chain of conformity:</i>	General conformity with RSS14 and national PPSs.
<i>Timetable:</i>	
<ul style="list-style-type: none"> <li><i>Evidence gathering and scoping sustainability appraisal</i></li> </ul>	January – March 2007
<ul style="list-style-type: none"> <li><i>Commencement of preparation of document: Pre-Submission consultation – preparing issues and alternative options and the initial sustainability appraisal report (Reg 25)</i></li> </ul>	April – June 2007
<ul style="list-style-type: none"> <li><i>Pre-Submission Public Participation: The Options consultation stage and formal Sustainability Appraisal Report (Regulation 26)</i></li> </ul>	July – September 2007
<ul style="list-style-type: none"> <li><i>Representations on Preferred Options (Reg 27)</i></li> </ul>	October – December 2007
<ul style="list-style-type: none"> <li><i>Preparation of submission DPD and any amendments to the Sustainability Appraisal Report</i></li> </ul>	January – April 2008
<ul style="list-style-type: none"> <li><i>Submission of document to SofS</i></li> </ul>	May – June 2008
<ul style="list-style-type: none"> <li><i>Representations on submitted Document and Sustainability Appraisal Report (Regulation 29)</i></li> </ul>	July – September 2008
<ul style="list-style-type: none"> <li><i>Pre-examination consideration of representations</i></li> </ul>	October 2008
<ul style="list-style-type: none"> <li><i>Pre-examination Meeting period</i></li> </ul>	November – January 2009
<ul style="list-style-type: none"> <li><i>Independent Examination</i></li> </ul>	February – April 2009
<ul style="list-style-type: none"> <li><i>Receipt of Inspectors binding Report</i></li> </ul>	May – July 2009
<ul style="list-style-type: none"> <li><i>Adoption &amp; Publication</i></li> </ul>	August – October 2009
<i>Arrangements for production:</i>	
<i>Which Department in Tendring DC will lead the process:</i>	Planning Policy Division within Regeneration, Planning and Community Services.
<i>Management Arrangements:</i>	Development Plan Manager
<i>Resources required:</i>	
<ul style="list-style-type: none"> <li><i>Internal</i></li> </ul>	Planning Policy
<ul style="list-style-type: none"> <li><i>External</i></li> </ul>	
<ul style="list-style-type: none"> <li><i>Approach to involving stakeholders &amp; community</i></li> </ul>	Consultants will be involved in SA/SEA work. All consultation will be done in

	<p>accordance with Regulations until adoption of the SCI in November 2007. Regulation 26 participation occur around the same time as adoption of the SCI therefore the SCI will apply to Regulation 26 onwards, if the SCI is adopted before Regulation 26 commences otherwise the SCI will apply to the submission stage.</p>
<p><i>Review of Document:</i></p>	<p>It will be monitored on an annual basis and will then be the subject of a review if the monitoring highlights such a need. The document will be formally reviewed at least once every two years.</p>

<i>Document Detail</i>	
Name of the Document (s)	<b>Site Specific Allocations: Housing &amp; Employment DPD</b>
What is the main role of this document:	To identify and allocate sufficient housing and employment land to cover the housing and employment needs in the district in accordance with requirements, vision and spatial strategy.
Geographic area this document will cover:	The Tendring District.
Status - Is it a Development Plan Document or not:	DPD
Chain of conformity:	With RSS14, Core Strategy and Development Control Policies Document and the relevant Government Guidance.
<i>Timetable:</i>	
<ul style="list-style-type: none"> <li>Evidence gathering and scoping sustainability appraisal</li> </ul>	October – December 2007
<ul style="list-style-type: none"> <li>Commencement of preparation of document: Pre-submission consultation – preparing issues and alternative options and the initial sustainability appraisal report (Reg 25)</li> </ul>	January – March 2008
<ul style="list-style-type: none"> <li>Pre-Submission Public Participation: The Options consultation stage and formal Sustainability Appraisal Report (Regulation 26)</li> </ul>	April - June 2008
<ul style="list-style-type: none"> <li>Representations on Preferred Options (Reg 27)</li> </ul>	July – September 2008
<ul style="list-style-type: none"> <li>Preparation of submission DPD and any amendments to the Sustainability Appraisal Report</li> </ul>	October – January 2009
<ul style="list-style-type: none"> <li>Submission of document to SofS</li> </ul>	February – May 2009. If any Site Allocations Representations have been received and the changes are proposed a further six weeks for representations on the suggested changes will be given (until May 2009).
<ul style="list-style-type: none"> <li>Representations on submitted Document and Sustainability Appraisal Report (Regulation 29)</li> </ul>	June – August 2009
<ul style="list-style-type: none"> <li>Pre-examination consideration of representations (Reg 31 and 32)</li> </ul>	September 2009
<ul style="list-style-type: none"> <li>Pre-examination Meeting period</li> </ul>	October – December 2009
<ul style="list-style-type: none"> <li>Independent Examination</li> </ul>	January – March 2010
<ul style="list-style-type: none"> <li>Receipt of Inspectors binding Report</li> </ul>	April – June 2010
<ul style="list-style-type: none"> <li>Adoption &amp; Publication</li> </ul>	July 2010
<i>Arrangements for production:</i>	
Which Department in Tendring DC will lead the process:	Planning Policy Division within Regeneration, Planning and Community Services.

<i>Management Arrangements:</i>	Development Plan Manager
<i>Resources required:</i>	
<ul style="list-style-type: none"> <li>• <i>Internal</i></li> </ul>	Planning Policy Team, Housing Department
<ul style="list-style-type: none"> <li>• <i>External</i></li> </ul>	Consultants will be involved with SA/SEA work
<ul style="list-style-type: none"> <li>• <i>Approach to involving stakeholders &amp; community</i></li> </ul>	Prior to Consultation, specific government bodies and if necessary private groups will be canvassed for their views. When sites have been identified a wide consultation process involving parish/town councils, local representatives of different bodies and groups and all relevant stakeholders will be engaged in the process to ensure that local issues are taken into account in the planning of specific sites. Consultation will be done in accordance with the SCI.
<i>Review of Document:</i>	It will be monitored on an annual basis and will then be the subject of a review if the monitoring highlights such a need. The document will be formally reviewed at least once every two years.

<i>Document Detail</i>	
<i>Name of the Document</i>	<b>Area Action Plan: Harwich</b>
<i>What is the main role of this document:</i>	Sets out guidelines and standards for the design of new development in Harwich.
<i>Geographic area this document will cover:</i>	Harwich
<i>Status - Is it a Development Plan Document or not:</i>	DPD
<i>Chain of conformity:</i>	The adopted Replacement Local Plan
<i>Timetable:</i>	
<ul style="list-style-type: none"> <li><i>Evidence gathering and scoping sustainability appraisal</i></li> </ul>	June – August 2006
<ul style="list-style-type: none"> <li><i>Commencement of preparation of document: Pre-submission consultation – preparing issues and alternative options and the initial sustainability appraisal report (Reg 25)</i></li> </ul>	September –November 2006
<ul style="list-style-type: none"> <li><i>Pre-Submission Public Participation: The Options consultation stage and formal Sustainability Appraisal Report (Regulation 26)</i></li> </ul>	December 2006- February 2007
<ul style="list-style-type: none"> <li><i>Representations on Preferred Options (Reg 27)</i></li> </ul>	March – May 2007
<ul style="list-style-type: none"> <li><i>Preparation of submission DPD and any amendments to the Sustainability Appraisal Report</i></li> </ul>	June – September 2007
<ul style="list-style-type: none"> <li><i>Submission of document to SofS</i></li> </ul>	October 2007 – November 2007
<ul style="list-style-type: none"> <li><i>Representations on submitted Document and Sustainability Appraisal Report (Regulation 29)</i></li> </ul>	December – February 2008
<ul style="list-style-type: none"> <li><i>Pre-examination consideration of representations (Reg 31 and 32)</i></li> </ul>	March 2008
<ul style="list-style-type: none"> <li><i>Pre-examination Meeting period</i></li> </ul>	April – June 2008
<ul style="list-style-type: none"> <li><i>Independent Examination</i></li> </ul>	July - September 2008
<ul style="list-style-type: none"> <li><i>Receipt of Inspectors binding Report</i></li> </ul>	October - December 2008
<ul style="list-style-type: none"> <li><i>Adoption &amp; Publication</i></li> </ul>	January - March 2009
<i>Arrangements for production:</i>	
<i>Which Department in Tendring DC will lead the process:</i>	Planning Policy Division within Regeneration, Planning and Community Services.
<i>Management Arrangements:</i>	Development Plan Manager
<i>Resources required:</i>	
<ul style="list-style-type: none"> <li><i>Internal</i></li> </ul>	Production of this document will have minimal impact on the resources of the Planning Policy. The Planning Policy team will be limited to giving guidance, advice and assist consultants as and when required.
<ul style="list-style-type: none"> <li><i>External</i></li> </ul>	Consultants will be mainly responsible for production of this document.
<ul style="list-style-type: none"> <li><i>Approach to involving stakeholders &amp; community</i></li> </ul>	Consultants will be involved in SA/SEA work. The Regulations will be applied to the whole of this document.
<i>Review of Document:</i>	It will be monitored on an annual basis and will then be the subject of a review if the monitoring highlights such a need. The document will be formally reviewed at least once every two years.

<i>Document Detail</i>	
<i>Name of the Document</i>	<b>Area Action Plan: Jaywick</b>
<i>What is the main role of this document:</i>	Sets out guidelines and standards for the design of new development in Jaywick
<i>Geographic area this document will cover:</i>	Jaywick
<i>Status - Is it a Development Plan Document or not:</i>	DPD
<i>Chain of conformity:</i>	The adopted Replacement Local Plan
<i>Timetable:</i>	
<ul style="list-style-type: none"> <li><i>Evidence gathering and scoping sustainability appraisal</i></li> </ul>	June – August 2006
<ul style="list-style-type: none"> <li><i>Commencement of preparation of document: Pre-submission consultation – preparing issues and alternative options and the initial sustainability appraisal report (Reg 25)</i></li> </ul>	September –November 2006
<ul style="list-style-type: none"> <li><i>Pre-Submission Public Participation: The Options consultation stage and formal Sustainability Appraisal Report (Regulation 26)</i></li> </ul>	December 2006- February 2007
<ul style="list-style-type: none"> <li><i>Representations on Preferred Options (Reg 27)</i></li> </ul>	March – May 2007
<ul style="list-style-type: none"> <li><i>Preparation of submission DPD and any amendments to the Sustainability Appraisal Report</i></li> </ul>	June – September 2007
<ul style="list-style-type: none"> <li><i>Submission of document to SofS</i></li> </ul>	October 2007 – November 2008
<ul style="list-style-type: none"> <li><i>Representations on submitted Document and Sustainability Appraisal Report (Regulation 29)</i></li> </ul>	December – February 2008
<ul style="list-style-type: none"> <li><i>Pre-examination consideration of representations (Reg 31 and 32)</i></li> </ul>	March 2008
<ul style="list-style-type: none"> <li><i>Pre-examination Meeting period</i></li> </ul>	April – June 2008
<ul style="list-style-type: none"> <li><i>Independent Examination</i></li> </ul>	July – September 2008
<ul style="list-style-type: none"> <li><i>Receipt of Inspectors binding Report</i></li> </ul>	October – December 2008
<ul style="list-style-type: none"> <li><i>Adoption &amp; Publication</i></li> </ul>	January – March 2009
<ul style="list-style-type: none"> <li><i>Arrangements for production:</i></li> </ul>	
<ul style="list-style-type: none"> <li><i>Which Department in Tendring DC will lead the process:</i></li> </ul>	Planning Policy Division within Regeneration, Planning and Community Services.
<i>Management Arrangements:</i>	Development Plan Manager
<i>Resources required:</i>	
<i>Internal</i>	Production of this document will have minimal impact on the resources of the Planning Policy. The Planning Policy team will be limited to giving guidance, advice and assist consultants as and when required.
<i>External</i>	Consultants will be mainly responsible for production of this document.
<ul style="list-style-type: none"> <li><i>Approach to involving stakeholders &amp; community</i></li> </ul>	Consultants will be involved in SA/SEA work. The Regulations will be applied to the whole of this document.
<ul style="list-style-type: none"> <li><i>Review of Document:</i></li> </ul>	It will be monitored on an annual basis and will then be the subject of a review if the monitoring highlights such a need. The document will be formally reviewed at least once every two years.

## 6. Supporting Statement

### 6.1 Main Background and Technical Studies

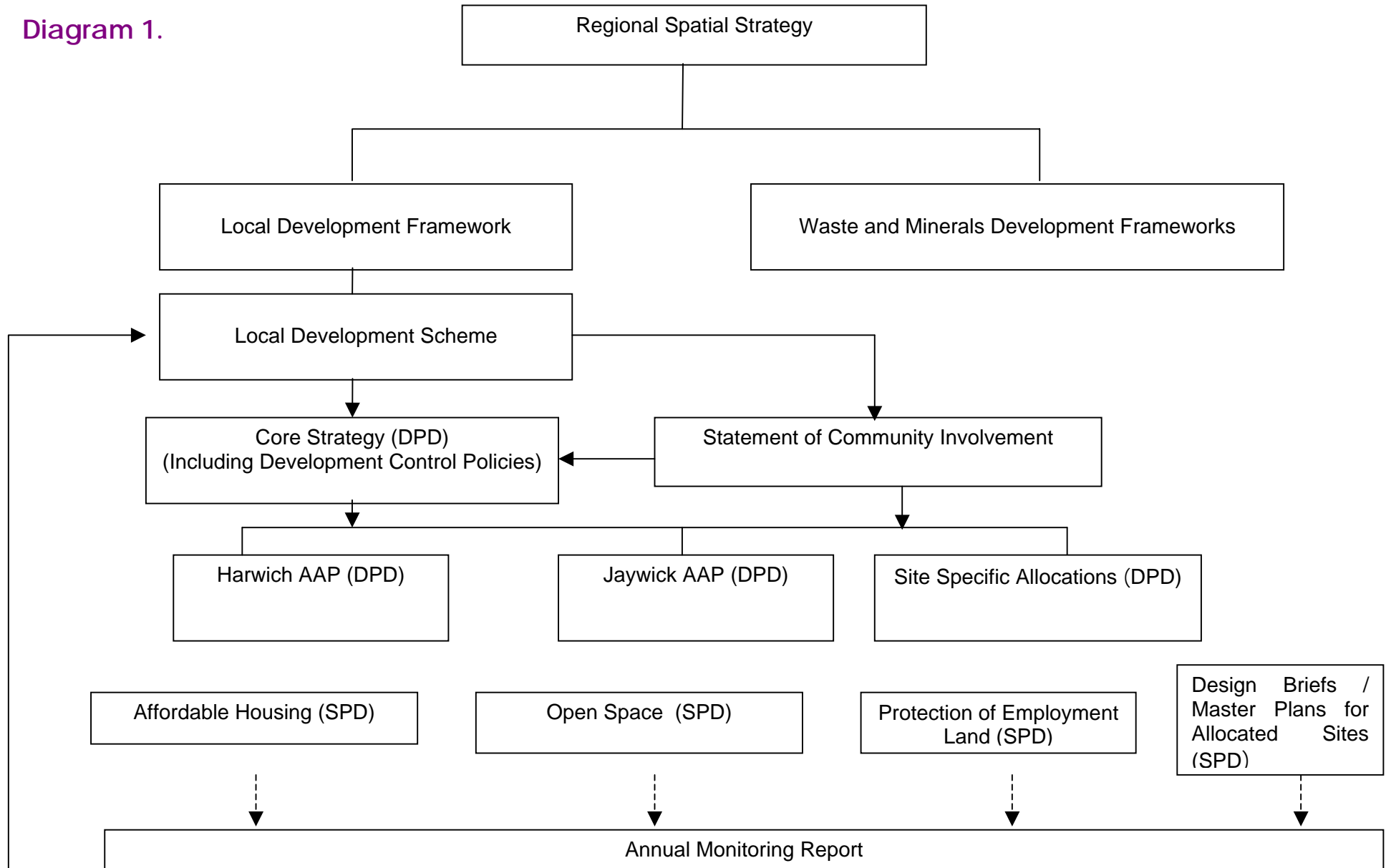
Many background technical studies have been completed that will enable or assist the Council to produce all of the above listed planning documents. The following studies have been produced and are publicly available.

Technical Studies:

- District wide Retail Study (1998) and Update (2003)
- Employment Land Studies 1,2,3 and 4 (2002-2004)
- Tourism Study (Oct 2002)
- Clacton Town Centre Strategy (Feb 2003)
- Housing Comparative Site Assessment Study (Apr 2004)
- Housing Technical Paper (Apr 2004)
- Urban Capacity Study (March 2002)
- Tendring Landscape Character Assessment (Nov 2001)
- Recreational Open Space Study (Feb 2003)
- Tendring Landscape Character Assessment Green Field Study (Dec 2001)
- Report on Public Participation in Landscape Character Assessment (Jan 2002)
- Children's Play Area Strategy: Tendring District (Nov 2002)
- Review of Tendring District Green Wedge Policy (Jul 2003)
- Boundary Definition for the Proposed Extension to the Suffolk Coast and Heaths AONB on the South side of the Stour Estuary (Jun 2003)
- Draft Conservation Area Character Appraisals (2001)
- Tendring District Transportation Strategy
- Tendring Passenger Transport Study (2001)
- Essex Local Transport Plan (Essex County Council)
- Tendring District Housing Needs Survey (2002)

Note that these studies have already been published and that the Council will consider whether it should rely on these documents, update them or undertake the study again. If production or alteration of these studies are necessary the Council will undertake a technical study review prior to any Development Plan Document preparation. However, it is not the intention of the Council to repeat any work that does not contribute to the new planning system. New studies may also be needed for post 2011 period i.e. for the LDF system and joint studies with adjoining councils are a possibility. In addition, joint working between adjoining districts is also a possibility in relation to providing the evidence base for the LDF.

Diagram 1.



## 6.2 Monitoring & Review

Tendring District Council is aiming to adopt the LDS as soon as possible in 2005 and once adopted the LDS will be monitored on an annual basis. The Council will consider whether any amendments are necessary and the Government Office will be consulted on any proposed alterations. Revision of the LDS will also be carried out in accordance with the procedures as set out in Part 3 of the Town and Country Planning (Local Development) (England) Regulations, 2004.

It is important that all planning documents included in the LDS remain up-to-date and therefore each document will need to be monitored and reviewed on a regular basis. A report called the Tendring District Annual Monitoring Report (AMR) will be produced each year. It is anticipated that the first Tendring AMR is published by December 2006. This report will consider the need to revise development control policies included in the Replacement Local Plan to address unforeseen or new circumstances such as new national planning statements, regional spatial strategy or changing local circumstances. Wherever change is needed this report will also indicate what implications these changes may have on other relevant strategies or on existing background documents.

After the adoption of the Replacement Local Plan the AMR will aim to monitor all DPDs included in the LDS. The Report will:

- Outline where the Council has reached in production of each LDD and give reasons if any LDD is behind schedule and identify steps to be taken to address the problem;
- Consider the planning policy implementation and effectiveness of existing policies and identify where change is necessary;

## 6.3 Risk Analysis

The extent of work involved in taking the emerging Replacement Local Plan through the inquiry process towards adoption and the uncertainty present until the outcome of the Bathside Bay Inquiry, impacts on the work and timetable of all documents listed in this LDS. It could also have a considerable impact on the resources that Tendring will have available to work on the LDF.

Government guidance stresses that the content of the LDS should be realistic and reflect the level of resources likely to be available. Currently there is a team of five full time professional planning staff (this does not include technical staff).

The timetable for the progression of the Replacement Local Plan through to adoption is based on certain assumptions about staff and financial resources being available. Whilst these assumptions are internal to the Council there are various external factors which will need to be taken account of and which may significantly affect the timetable. Chief amongst these is the pending Government decision on the Bathside Bay Container port proposed at Harwich.

This Council has identified the risks that may impact on the Council to achieve the milestones set out in the LDS. These risks are numbered from 1- 6 and plotted on a matrix (figure 1) according to their likelihood and potential impact with the top plotted in the top right corner of the matrix going down to the lowest risk in the bottom left corner of the matrix. The risks identified by the council are:

- Resources: Loss of senior managers and officers (1)
- Bathside Bay (2)
- The Regional Spatial Strategy (3)
- Direction by GO-East to abandon the draft Replacement Local Plan (4)
- Members consideration of the Redeposit Local Plan (5)
- Financial Management (6)

### **Resources: Loss of staff**

The one significant impact issue, which is very real and currently beyond the control of the Council, would be the impact caused should the Council lose senior or managerial level qualified planning officers. In a buoyant national market which has insufficient professional planning staff available the loss of experienced planning officers would seriously hamper the Council's ability to maintain the Local Plan programme. The recent strengthening of the Planning Service with additional planning staff, has proved very difficult to achieve and has taken considerably longer than this Council would have wanted. The potential loss of qualified staff in the future would have a high impact on this authority's ability to deliver to programme, since it would be difficult to maintain the momentum if external agency support had to be sought in that event.

### **Bathside Bay:**

The Replacement Local Plan First Deposit Draft (May 2004) was drawn up on the basis that the Bathside Bay development would go ahead or would be at least partly implemented in the Current Local Plan period (up to 2011). The Public Inquiry into the port development ended in October 2004 and the Inspector's Report, is expected to be completed, by the end of March 2005. This Report will then be submitted to the Government for a decision.

Expectations are that the ministerial decision will be given approximately 12 months after the close of the Inquiry i.e. September 2005. However, an earlier decision is possible and it is this latter assumption which has dictated the Council's timetable for the Re-deposit Draft of the Replacement Local Plan i.e. Deposit period: November/ December 2005. If by September 2005 no decision has been received or the decision has been made and is unfavourable then the Local Plan would proceed on the basis of a proposed safeguarding allocation for Bathside Bay in accordance with the strategic policy framework and Policy HAR 1.

### **The Regional Spatial Strategy:**

The draft Regional Spatial Strategy provides for an additional housing requirement of dwellings to be accommodated within the district 2011 – 2021. This Council in responding to the recent consultation exercise was agreeable to this level of growth. Indeed the annual rate of dwellings completed in the

past five years 1999/2000 to 2003/4 was 393, which is comparable to the East of England Plan annual requirement 2001-2021 of 425 dwellings per year. Overall, the risk of non-delivery of new dwellings within this district is considered to be a very low and manageable.

**Direction by GO-East to abandon the Replacement Local Plan:**

The Government Office for the Eastern Region has expressed concerns about the time it will take to move from the current Local Plan process to the new Local Development Framework. GO-East desire to see rapid progress to update the currently outdated adopted Tendring Local Plan (1998) but accept the current programme for preparing the Re-deposit Local Plan, and are unlikely to intervene provided the current timetable is met which ensures public consultation on the Plan is held in 2005. A pragmatic position has been taken to deliver the new Replacement Local Plan as quickly as possible and move to the new Local Development Framework system in early 2007.

**Members consideration of the Replacement Local Plan:**

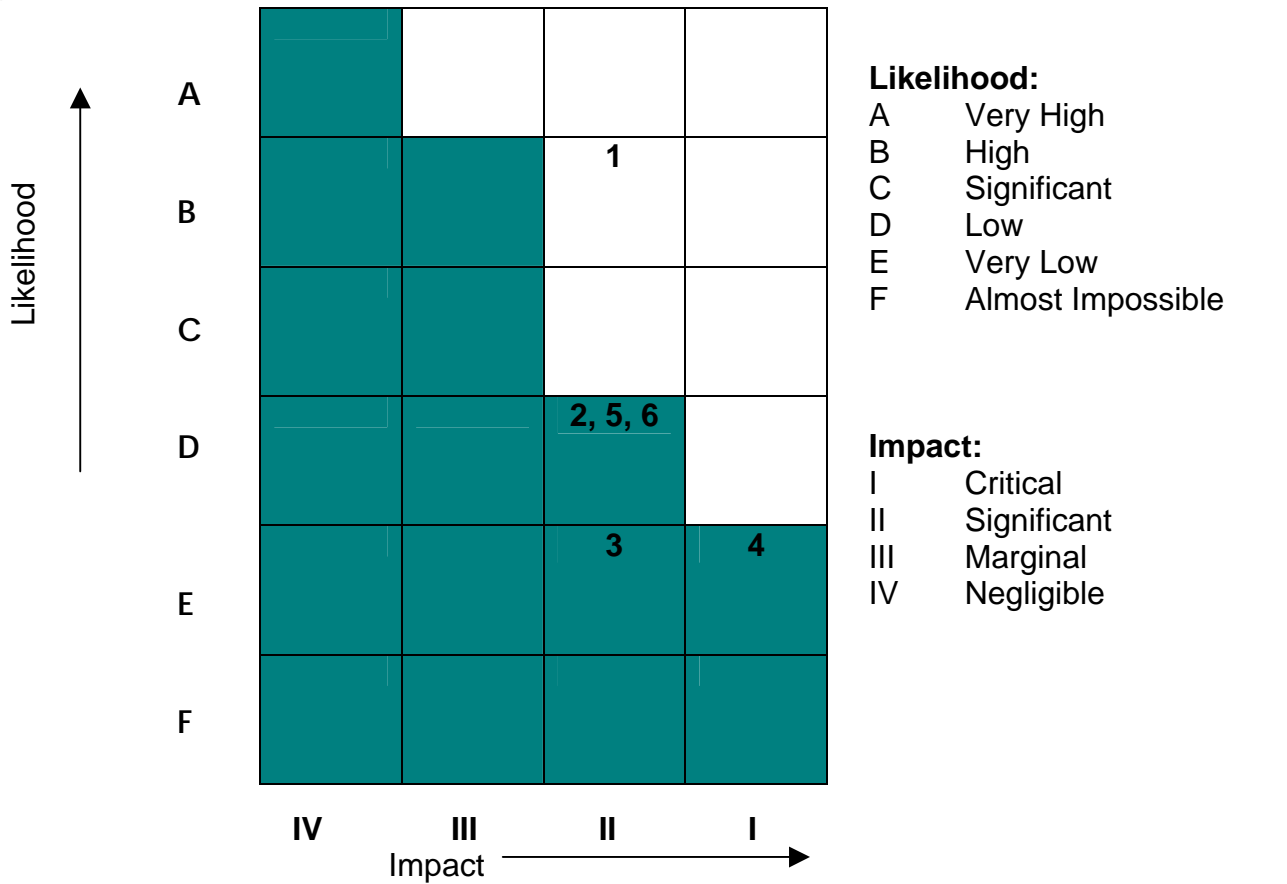
Members' consideration of the Re-deposit Replacement Local Plan involves a number of internal consultation processes involving the Executive, the Overview and Scrutiny Committee and Development Control Committee. This will help to streamline the overall progress of the Plan through the Council. Stringent timetabled processes and procedures have been put in place to review all of the responses that have been submitted to the Council, given that due care is needed to ensure a careful balance is struck between the analysis and review process and the need to make rapid progress with the Local Plan. Whilst an area of obvious risk managers feel that the right balance between allowing sufficient scrutiny and making progress has been struck. Hence the value that this is a low risk.

**Financial Management:**

Last autumn in line with the new performance management approach to managing the draft Local Plan the Council amended the Local Plan budget to address any cost increases arising from technical to legal issues which needed to be budgeted for to take the Local Plan through to adoption in 2007. This Council has put the Local Plan onto a firm financial basis over the lifetime of preparation of the Replacement Local Plan. Consequently any budgetary risk, whilst significant in nature is considered to be manageable in the next three years. This issue is therefore viewed as being a low risk.

The timetable and schedule set out in this document takes into account all of the above factors.

Figure 1



**Risks:**

- 1 – Loss of senior managers and officers
- 2 – Bathside Bay
- 3 – Regional Spatial Strategy
- 4 – Direction by GO-East to abandon the Replacement Local Plan
- 5 – Members consideration of the Replacement Local Plan
- 6 – Financial Management